



BARCO®

SPRING | SUMMER 2024

BARCO®
Made to Matter



BOW894 Venture Warm-Up **NEW**

BOK804 Accelerate Top **NEW**

BOP513 Boost Jogger



TABLE OF CONTENTS

08	BARCO® UNDERSCRUBS
10	GREY'S ANATOMY™ BY BARCO SPANDEX STRETCH
22	GREY'S ANATOMY™ BY BARCO IMPACT
26	GREY'S ANATOMY™ BY BARCO EVOLVE
30	GREY'S ANATOMY™ BY BARCO
36	BARCO® ONE
50	BARCO® UNIFY
54	SKECHERS™ BY BARCO
62	LAB COATS



ON THE COVER

BARCO® ONE

PERFORMANCE KNIT COLLECTION **NEW**

LEFT -

Engage Top BOT210

Pro Jogger BOP631

RIGHT -

Victory Top BOT209

Accelerate Top BOK804

Sprint Pant BOP645

barcomade.com

Marketing, Simplified.

EXPLORE BARCO'S DIGITAL MARKETING RESOURCE CENTER



New - Spring Color
BARCO ONE

2061 Wave Blue

To access, scan the
QR CODE or login to
B2B.BARCOUNIFORMS.COM



MAP DATES 2024

Winter Promotion

January 5 - January 15

Nurses Appreciation Week

May 1 - May 14

Summer Promotion

July TBD

Customer Appreciation Sale

August 2 - August 12

Black Friday & Cyber Monday

November 27 - December 6

 facebook.com/barcouniforms

 instagram.com/barcomade

 twitter.com/BarcoUniforms

HOW TO MEASURE

Take all measurements over undergarments using standard measuring tape held in a relaxed straight line.

Chest/Bust: Place measuring tape under the arms to measure the distance around the shoulder blades and the fullest part of the bust/chest. Do not hold the tape too tight.

Waist: Place measuring tape around the natural waistline.

Hip: Stand with feet a few inches apart and measure around the fullest part of your hips wearing your undergarments.

Inseam: Measure from the crotch to the desired length of the pant, breaking at the top of the shoe and just above the heel in the back. Appropriate shoes should be worn.



FIT SIZE GUIDE

BASED ON YOUR BODY MEASUREMENTS

Women's/Women's Labs													
Size	XXS	XS	S	M	L	XL	2XL	3XL	4XL	5XL			
	00	0-2	4-6	8-10	12-14	16-18	20-22	24-26	28-30	32-34			
Bust	31-32	33-34	35-36	37-39	40-42	43-45	46-48	50-52	54-56	58-60			
Waist	23½-24½	25½-26½	27½-28½	29½-31½	32½-34½	35½-37½	39-41	43-45	47-49	51-53			
Hip	34-35	36-37	38-39	40-42	43-45	46-48	49-51	53-55	57-59	61-63			
Men's													
Size	XXS	XS	S	M	L	XL	2XL	3XL	4XL	5XL			
	29-31	32-34	35-37	38-40	42-44	46-48	50-52	54-56	58-60	62			
Chest	30-32	33-35	36-38	39-41	43-45	47-49	51-53	55-57	59-61	63-65			
Waist	23½-25½	26½-28½	29½-31½	32½-34½	36½-38½	40½-42½	44½-46½	48½-50½	52½-54½	56½-58½			
Hip	30½-31½	33½-34½	36½-37½	38½-40½	42½-44½	46½-48½	49-51	53-55	57-59	61-63			
Men's Labs													
Size	32	34	36	38	40	42	44	46	48	50	52	54	56
Chest	32	34	36	38	40	42	44	46	48	50	52	54	56
Waist	26	28	30	32	34	36	38	40	42	44	46	48	50

BARCO® BRANDS

GREY'S ANATOMY™

**MADE TO
MOVE**



**Spandex
Stretch**



**Soil
Release**



**Extreme
Comfort**



**Moisture
Wicking**

**IMPACTFUL
DETAILS**



**Spandex
Stretch**



**Soil
Release**



**Extreme
Comfort**



**Moisture
Wicking**

**AUTHENTIC
STYLE**



**Super-Soft
Touch**



**Easy
Care**



**All-Day
Freshness**



**Moisture
Wicking**

**CARING FOR
PATIENT AND
PLANET**



**Recycled
Polyester Blend**



**360°
Spandex Stretch**



**Wrinkle
Release**



**Moisture
Wicking**

BARCO®

**SUSTAINABLE
PERFORMANCE**



**5 Recycled Bottles
Per Garment**



**4-Way
Stretch**



**Anti
Static**



**Moisture
Wicking**

**PERFORMANCE
KNIT**



**5 Recycled Bottles
Per Garment**



**4-Way
Stretch**



**Super-Soft
Touch**



**Moisture
Wicking**

**MADE TO
UNITE**



**360°
Spandex Stretch**



**Wrinkle
Release**



**Super-Soft
Touch**



**Moisture
Wicking**

SKECHERS™

**SUSTAINABLE
VALUE**



**Eco-Friendly
Fabric**



**4-Way
Stretch**



**Comfort
Included**



**Moisture
Wicking**

New Fashion Colors

Spring 2024

DECEMBER – APRIL

Summer 2024

APRIL – JULY



2301 Vibrance Pink

2103 Purple Freesia

2304 Pink Topaz



2304 Pink Topaz



2314 Driftwood



2061 Wave Blue

2351 Sunset Coral

2015 Grenadine



1876 Light Peach



2301 Vibrance Pink

BARCO[®]
Made to Matter



MIX & MATCH

IN BOTH SOLID CORE COLORS AND HEATHERED SHADES, THIS NEW UNDERSCRUB PAIRS PERFECTLY WITH ANY OF OUR BARCO BRAND COLLECTIONS.

NEW COLORS
SPRING



01
Black



10
White



2330
Grey Heather



2331
Indigo Heather

**PRIMARY
FABRIC CONTENT**

46% Recycled Polyester
42% Polyester
12% Spandex

*see product details on page 42

Accelerate Top BOK804
Uplift Pant BOP597



Surge Top BOK803
Amplify Pant 0217



Accelerate Top BOK804
Uplift Pant BOP597



Surge Top BOK803
Vortex Pant BOP520



GREY'S ANATOMY™

abc signature

©ABC Signature

PROFESSIONAL WEAR
BY BARCO

+ SPANDEX STRETCH

METRO-MIX

OUR FRESH TAKE ON MODERN HEALTHWEAR —
SOME PEOPLE CALL IT A UNIFORM.

NEW COLOR
SPRING



2353
Black Two-Tone

*see product details on next page

Cristina Vest GRSV845
Meredith Top GRST194
Amelia Jogger GRSP639



Ethan Top GRST204
Nathan Pant GRSP641



Lucas Warm-Up GRSW892
Ethan Top GRST204
Nathan Pant GRSP641



Meredith Top GRST194
Amelia Jogger GRSP639



TWO-TONE COLLECTION - NEW

GRST194 Meredith Top **NEW**

4-pocket, banded two-tone V-neck, front and back princess seams, top-entry waist pockets, hidden zipper waist pocket, shirt tail hem top

Sizes: *XXS - 3XL, CB: 25.5"*

Color shown: *2304 Pink Topaz*



- 01 Black
- 08 New Royal
- 23 Indigo
- 2304 Pink Topaz

GRSV845 Cristina Vest **NEW**

2-pocket, rib knit neck band and side panels, diamond quilted body, badge loop, zipper waist pockets, zip-front vest

Sizes: *XXS - 3XL, CB: 26"*

Color shown:

2353 Black Two-Tone



- 2353 Black Two-Tone

GRSP639 Amelia Jogger **NEW**

5-pocket, two-tone waistband with drawcord, mid-rise, flap cargo pockets, patch back pocket, rib knit cuff jogger

Sizes: *XXS - 3XL, I: 29"*

XSP - XLP, I: 27"

Leg Opening: *4.25"*

Color shown: *08 New Royal*



- 01 Black
- 08 New Royal
- 23 Indigo
- 2304 Pink Topaz

Fabric Content

Fabric (solid) - 74% Polyester / 23% Rayon / 3% Spandex twill

Fabric (two-tone) - 64% Polyester / 33% Rayon / 3% Spandex

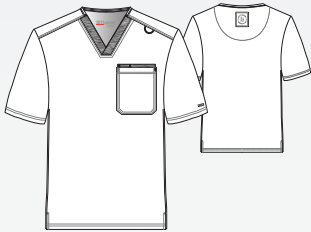


GRST204 Ethan Top NEW

2-pocket, two-tone banded V-neck, double chest pocket, straight hem top

Sizes: XS - 3XL, CB: 29"

Color shown: 08 New Royal



01 Black

08 New Royal

23 Indigo

GRSW892 Lucas Warm-Up NEW

4-pocket rib knit neck band, two-tone sleeves, waist flap pockets, sleeve patch pockets with zipper, rib knit cuffs and waistband, zip-front warm-up

Sizes: XS - 3XL, CB: 29"

Color shown:

2353 Black Two-Tone



2353 Black Two-Tone



GRSP641 Nathan Pant NEW

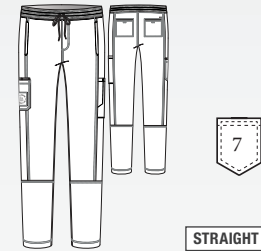
7-pocket, two-tone waistband with drawcord, on-seam front pockets, patch cargo pockets, welt back pockets with velcro closure, slim straight pant

Sizes: XS - 3XL, I: 32"

XSS - XLS, I: 30"

Leg Opening: 7.5"

Color shown: 08 New Royal



STRAIGHT LEG

01 Black

08 New Royal

23 Indigo

Fabric Content

Fabric (solid) - 74% Polyester / 23% Rayon / 3% Spandex twill

Fabric (two-tone) - 64% Polyester / 33% Rayon / 3% Spandex



GREY'S ANATOMY™

abc signature

©ABC Signature

PROFESSIONAL WEAR
BY BARCO

+ SPANDEX STRETCH



COLOR CRUSH

THE POLISHED PERFECTION YOU EXPECT
IN UNEXPECTED SHADES YOU'LL LOVE.

NEW COLOR
SPRING



2301
Vibrance Pink

NEW COLOR
SUMMER



2103
Purple Freesia

*see product details on next page

Capri Top GRST136
Eden Jogger GRSP537



Millie Jacket GRSW017
Serena Top GRST045
Serena Pant GRSP526



Millie Jacket GRSW017
Serena Top GRST045
Serena Pant GRSP526



Capri Top GRST136
Eden Jogger GRSP537



GRST136 Capri Top

2-pocket, hourglass V-neck, front and back princess seams, chest and sleeve welt pockets, rib knit center back panel, high-low hem

Sizes: XXS - 3XL, CB: 25.5"

Color shown: 2103 Purple Freesia

Knit Accent Content:
94% Polyester /6% Spandex



ANTIMICROBIAL

01 Black
08 New Royal
10 White
23 Indigo
37 Hunter •NEW SU
40 Ciel
65 Wine
312 Olive
328 Bahama
512 Brilliance
905 Steel
2103 Purple Freesia •NEW SU

GRST045 Serena Top

3-pocket, ribbed V-neck, PDA pocket, logo tape side slit detail, rib knit back insets with princess seam, straight hem

Sizes: XXS - 3XL, CB: 25.5"

Color shown: 2301 Vibrance Pink

Knit Accent Content:
94% Polyester /6% Spandex



ANTIMICROBIAL

01 Black
08 New Royal
10 White
23 Indigo
37 Hunter
39 Teal
40 Ciel
65 Wine
312 Olive
328 Bahama
471 Moonstruck
512 Brilliance
600 Scarlet
905 Steel
2103 Purple Freesia •NEW SU
2301 Vibrance Pink •NEW SP

GRST124 Carly Top

3-pocket, sport neck, rib knit front and back panels, exposed zipper pocket, shirt tail hem

Sizes: XXS - 3XL, CB: 25.5"

Color shown: 40 Ciel

Knit Accent Content:
94% Polyester /6% Spandex



ANTIMICROBIAL

01 Black
08 New Royal
10 White
23 Indigo
37 Hunter
39 Teal
40 Ciel
65 Wine
312 Olive
328 Bahama
512 Brilliance
600 Scarlet
905 Steel

GRST001 Kim Top

3-pocket, V-neck surplice with front and back princess seams, zip front pocket

Sizes: XXS - 5XL, CB: 26"

Color shown: 23 Indigo



01 Black
08 New Royal
10 White
23 Indigo
39 Teal
40 Ciel
65 Wine
312 Olive
328 Bahama
471 Moonstruck
600 Scarlet
905 Steel

All Styles Main Fabric

74% Polyester /23% Rayon /3% Spandex twill

G denotes colors supported for Groups

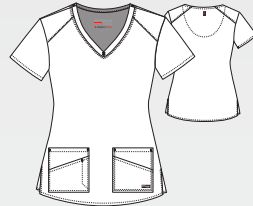


GVST028 Bree Tuck-In Top
 1-pocket, knit V-neck with light grey badge loop and shaped high-low hem
 Sizes: XS - 3XL, CB: 25.5"
 Color shown: 471 Moonstruck

Knit Accent Content:
 88% Polyester / 12% Spandex



GRST011 Emma Top
 4-pocket, V-neck with angled seams
 Sizes: XXS - 5XL, CB: 26"
 Color shown: 39 Teal



GRSW017 Millie Jacket
 3-pocket, rib neck, zip front placket, PDA and zip pocket, princess seamed front, back seams and ribbed cuff
 Sizes: XS - 3XL, CB: 26"
 Color shown: 2301 Vibrance Pink

Knit Accent Content:
 94% Polyester / 6% Spandex



GRSW873 Gianna Warm-Up
 5-pocket, round neck, zip front, PDA and zipper pocket, rib back panel, rib cuff warm-up
 Sizes: XXS - 5XL, CB: 25.5"
 Color shown: 328 Bahama

Knit Accent Content:
 94% Polyester / 6% Spandex



ANTIMICROBIAL

01 Black	G
08 New Royal	G
10 White	•NEW SU
23 Indigo	G
37 Hunter	•NEW SP
39 Teal	G
40 Ciel	G
65 Wine	G
312 Olive	G
328 Bahama	G
471 Moonstruck	
503 Galaxy	G
[Diagonal Stripes]	
905 Steel	G
[Diagonal Stripes]	
2301 Vibrance Pink	•NEW SP

01 Black	G
08 New Royal	G
10 White	G
23 Indigo	G
37 Hunter	G
39 Teal	G
40 Ciel	G
65 Wine	G
312 Olive	G
328 Bahama	G
471 Moonstruck	
503 Galaxy	G
[Diagonal Stripes]	
600 Scarlet	
905 Steel	G
1277 Eggplant	
2103 Purple Freesia	•NEW SU
2301 Vibrance Pink	•NEW SP

01 Black	G
08 New Royal	G
10 White	G
23 Indigo	G
37 Hunter	•NEW SP
39 Teal	G
40 Ciel	G
65 Wine	G
312 Olive	G
328 Bahama	G
471 Moonstruck	•NEW SP
503 Galaxy	G
[Diagonal Stripes]	
600 Scarlet	•NEW SP
905 Steel	G
[Diagonal Stripes]	
2301 Vibrance Pink	•NEW SP

01 Black	
08 New Royal	
10 White	
23 Indigo	
37 Hunter	
39 Teal	
40 Ciel	
65 Wine	
312 Olive	
328 Bahama	
471 Moonstruck	
[Diagonal Stripes]	
600 Scarlet	
905 Steel	
[Diagonal Stripes]	

G denotes colors supported for Groups

All Styles Main Fabric
 74% Polyester/23% Rayon/3% Spandex twill



GRSP526 Serena Pant

7-pocket, duchess knit waistband with drawcord, mid-rise, patch pockets, double cargo, slit hem, logo tape detail tapered leg

Sizes: XXS - 3XL, I: 30"
 XSP - XLP, I: 28"
 XST - XLT, I: 32"
 Leg Opening: 6.5"
 Color shown: 905 Steel

Knit Accents Content:
 88% Polyester / 12% Spandex



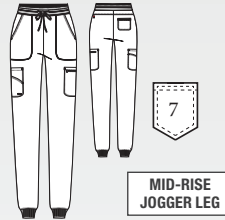
MID-RISE
 TAPERED LEG

GRSP527 Carly Jogger

7-pocket, rib trim waistband, mid-rise, front slant pockets, double cargo pocket, zipper PDA, rib knit cuff jogger

Sizes: XXS - 3XL, I: 29"
 XSP - XLP, I: 27"
 XST - XLT, I: 31"
 Leg Opening: 4.25"
 Color shown: 40 Ciel

Knit Accents Content:
 94% Polyester / 6% Spandex



MID-RISE
 JOGGER LEG

GRSP537 Eden Jogger

5-pocket, knit rib drawcord waistband, zipper front pockets, double single cargo, ribbed cuff jogger

Sizes: XXS - 3XL, I: 29"
 XXSP - 2XLP, I: 27"
 XST - XLT, I: 31"
 Leg Opening: 4.25"
 Color shown: 312 Olive

Knit Accents Content:
 94% Polyester / 6% Spandex



MID-RISE
 JOGGER LEG

GRSP500 Kim Pant

3-pocket, logo plush elastic back waistband, zip cargo pocket

Sizes: XXS - 5XL, I: 31"
 XXSP - 2XLP, I: 29"
 XXST - XLT, I: 33.5"
 Leg Opening: 7.75"
 Color shown: 600 Scarlet

Knit Accents Content:
 88% Polyester / 12% Spandex



MID-RISE
 STRAIGHT LEG

ANTIMICROBIAL

01 Black
08 New Royal
10 White
23 Indigo
37 Hunter
39 Teal
40 Ciel
65 Wine
312 Olive
328 Bahama
471 Moonstruck
512 Brilliance
600 Scarlet
905 Steel
2103 Purple Freesia •NEW SU
2301 Vibrance Pink •NEW SP

ANTIMICROBIAL

01 Black
08 New Royal
10 White
23 Indigo
37 Hunter
39 Teal
40 Ciel
65 Wine
312 Olive
328 Bahama
512 Brilliance
600 Scarlet
905 Steel

01 Black
08 New Royal
10 White
23 Indigo
37 Hunter
39 Teal
40 Ciel
65 Wine
312 Olive
328 Bahama
471 Moonstruck
503 Galaxy
905 Steel
2103 Purple Freesia •NEW SU
2301 Vibrance Pink •NEW SP

01 Black
08 New Royal
10 White
23 Indigo
37 Hunter
39 Teal
40 Ciel
65 Wine
312 Olive
328 Bahama
471 Moonstruck
503 Galaxy
600 Scarlet
905 Steel
1277 Eggplant
2301 Vibrance Pink •NEW SP

G denotes colors supported for Groups

All Styles Main Fabric
 74% Polyester/23% Rayon/3% Spandex twill



GRST079 Murphy Top
 2-pocket, V-neck shaped chest pocket, zipper sleeve pocket top
 Sizes: XS - 5XL, CB: 29"
 Color shown: 23 Indigo

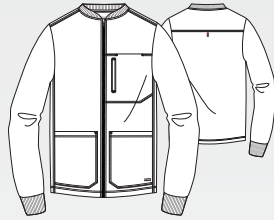


ANTIMICROBIAL

01 Black	G
08 New Royal	G
10 White	G
23 Indigo	G
37 Hunter	G
39 Teal	G
40 Ciel	G
65 Wine	G
312 Olive	G
328 Bahama	G
471 Moonstruck	
503 Galaxy	G
905 Steel	G

GRSW871 React Warm-Up
 5-pocket knit stand collar with zipper front, chest patch, zipper welt pocket, chin guard, and knit cuff warm-up
 Sizes: XS - 5XL, CB: 29"
 Color shown: 905 Steel

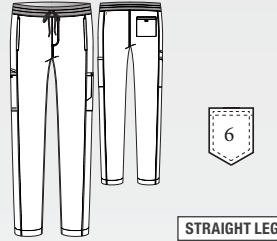
Knit Accents Content:
 94% Polyester /6% Spandex



ANTIMICROBIAL

01 Black	G
08 New Royal	G
10 White	G
23 Indigo	G
37 Hunter	G
39 Teal	G
40 Ciel	G
65 Wine	G
312 Olive	G
328 Bahama	G
471 Moonstruck	•NEW SP
503 Galaxy	G
905 Steel	G

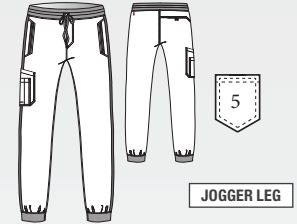
GRSP617 Hudson Pant
 6-pocket, rib knit with plush elastic embedded waistband, two-tone drawcord, front zipper fly, on-seam front pockets, side leg panel with top entry cargo pockets, welt back pocket, slim straight pant
 Sizes: XS - 5XL, I: 32"
 XSS - 2XLS, I: 30"
 XST - 2XLT, I: 34"
 Leg Opening: 7.5"
 Color shown: 01 Black



ANTIMICROBIAL

01 Black	G
08 New Royal	G
10 White	•NEW SP
23 Indigo	G
37 Hunter	•NEW SP
39 Teal	•NEW SP
40 Ciel	G
65 Wine	•NEW SP
328 Bahama	G
471 Moonstruck	
503 Galaxy	G
905 Steel	G

GRSP550 Murphy Jogger
 5-pocket, rib knit with plush elastic embedded waistband, two-tone drawcord, front zipper fly, zipper front pockets, angled single double cargo pocket, single back pocket, rib knit cuff jogger
 Sizes: XS - 5XL, I: 29"
 XSS - 2XLS, I: 27"
 XST - XLT, I: 31"
 Leg Opening 5.25"
 Color shown: 40 Ciel
 Knit Accents Content:
 94% Polyester /6% Spandex



ANTIMICROBIAL

01 Black	G
08 New Royal	G
10 White	G
23 Indigo	G
37 Hunter	G
39 Teal	G
40 Ciel	G
65 Wine	G
312 Olive	G
328 Bahama	G
471 Moonstruck	
503 Galaxy	G
905 Steel	G

G denotes colors supported for Groups

All Styles Main Fabric
 74% Polyester/23% Rayon/3% Spandex twill



New
SPRING
 Prints



GREY'S ANATOMY™
 abc signature PROFESSIONAL WEAR
 BY BARCO

+ SPANDEX STRETCH

All Styles Main Fabric
 50% Polyester
 43% Recycled Polyester
 7% Spandex

GRST154-KAIG
Kailua Garden NEW
 4-pocket, shaped V-neck
 with angled pockets and
 shoulder seams
 Sizes: XS - 5XL, CB: 26"

Coordinating colors:

01 Black	08 New Royal
39 Teal	40 Ciel
2301 Vibrance Pink	

GRST207-FLSC
Floral Scents NEW
 4-pocket, V-neck seamed
 sleeve top
 Sizes: XS - 5XL, CB: 26"

Coordinating colors:

01 Black	10 White
----------	----------



New
SUMMER
Prints

GREY'S ANATOMY™ SPANDEX STRETCH

GRST154-ELPE
Electric Peacock NEW

4-pocket, shaped V-neck with angled pockets and shoulder seams

Sizes: XS - 5XL, CB: 26"

Coordinating colors:

08 New Royal	2103 Purple Freesia
--------------	---------------------

GRST154-TRDM
Tropical Morning NEW

4-pocket, shaped V-neck with angled pockets and shoulder seams

Sizes: XS - 5XL, CB: 26"

Coordinating colors:

01 Black	23 Indigo
65 Wine	312 Olive
471 Moonstruck	2103 Purple Freesia
2301 Vibrance Pink	

GREY'S ANATOMY™
PROFESSIONAL WEAR
BY BARCO
abc signature
© ABC Signature
+ SPANDEXSTRETCH

All Styles Main Fabric
50% Polyester
43% Recycled Polyester
7% Spandex

GREY'S ANATOMY™

abc signature

©ABC Signature

PROFESSIONAL WEAR
BY BARCO

iMPACT

MEET YOUR DAY HEAD-ON

BOOST YOUR SCRUB STYLE - ADD A
SPORTY TWIST TO YOUR ROTATION.

NEW COLOR
SPRING



2304
Pink Topaz

*see product details on next page

Range Pant GIP648



NEW Octave Top GIT212
NEW Range Pant GIP648



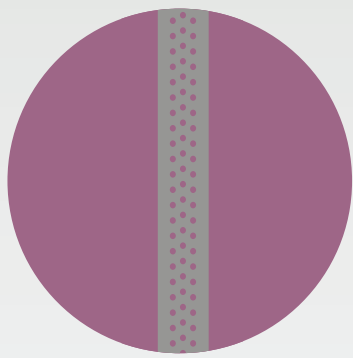
Accelerate Top BOK804
Range Pant GIP648



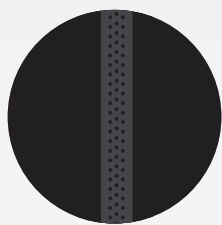
Accelerate Top BOK804
Range Pant GIP648



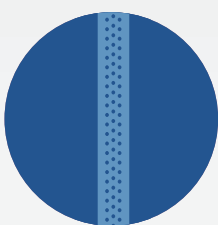
NEW Perforated Tape



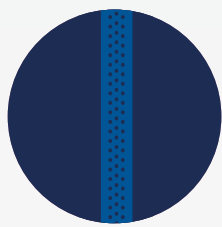
Pink Topaz



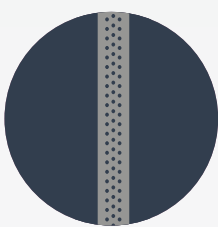
Black



New Royal



Indigo



Steel

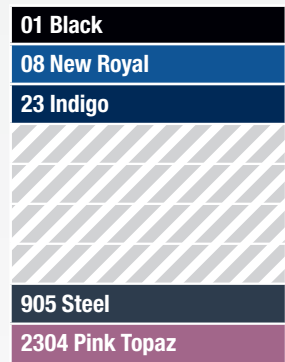
GIT212 Octave Top NEW

2-pocket, banded knit collar, on-seam hidden zipper pockets, perforated tape, tuck-in top
 Sizes: *XXS - 3XL, CB: 25.5"*
 Color shown: *2304 Pink Topaz*



GIP648 Range Pant NEW

5-pocket, knit waistband with inside drawcord, on-seam front pockets, cargo pockets with perforated tape, zipper back pocket, tapered leg pant
 Sizes: *XXS - 3XL, I: 30"*
XXSP - XLP, I: 28"
XXST - XLT, I: 32"
 Leg Opening: *6.5"*
 Color shown: *2304 Pink Topaz*



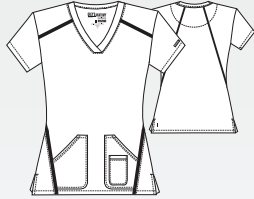
All Styles Main Fabric
 74% Polyester / 23% Rayon / 3% Spandex



7188 Elevate Top

3-pocket, crossover V-neck with Barco Tape* detailing at front and back seaming, including 2 patch pockets with utility pocket

Sizes: *XXS - 3XL*, CB: 25.5"
Color shown: 905 Steel



01 Black
08 New Royal
23 Indigo
40 Ciel
65 Wine
312 Olive
328 Bahama
905 Steel
2304 Pink Topaz

7228 Elevate Pant

6-pocket, mid-rise straight leg cargo with hidden welt pocket, knit comfort elastic waistband, grommet eyes with titanium colored tipped ties, back vents at hem and Barco Tape* detailing

Sizes: *XXS - 3XL*, I: 31.5"
XXSP - XLP, I: 29.5"
XXST - XLT, I: 33.5"
Leg Opening: 7.375"
Color shown: 65 Wine



Knit Accent Content:
88% Polyester / 12% Spandex

01 Black
08 New Royal
23 Indigo
40 Ciel
65 Wine
312 Olive
328 Bahama
905 Steel
2304 Pink Topaz

All Styles Main Fabric
74% Polyester / 23% Rayon / 3% Spandex



GREY'S ANATOMY™

abc signature
©ABC Signature

PROFESSIONAL WEAR
BY BARCO

EVOLVE STRETCH



EVOLVE

CARING FOR PATIENT + PLANET

NEW COLOR
SPRING



2314
Driftwood

CORE COLOR
SUMMER



10
White

*see product details on next page

Journey Top GSST179
NEW Highland Pant GSSP649



Sway Top GSST181



Journey Top GSST179
Cycle Warm-Up GSSW887

GSST180 Rhythm Top

2-pocket, V-neck with piped edge finish, inset waist pockets, pen pocket

Sizes: XXS - 5XL, CB: 25.5"
Color shown: 2348 Fern



GSST181 Sway Top

1-pocket, banded V-neck, badge loop, chest patch pocket, high-low step hem, tuck-in

Sizes: XXS - 5XL, CB: 25.5"
Color shown: 08 New Royal



GSSW886 Virtue Warm-Up

3-pocket, banded collar, badge loop, zip-front, side-entry waist pockets warm-up

Sizes: XXS - 5XL, CB: 26"
Color shown: 905 Steel



GSSP627 Cosmo Pant

6-pocket, encased elastic waistband with inner drawcord, mid-rise, side panels with angled welt and patch cargo pocket, tapered leg pant

Sizes: XXS - 5XL, I: 30"
XSP - 2XLP, I: 28"
XST - XLT, I: 32"
Leg Opening: 7"
Color shown: 2314 Driftwood



GSSP625 Terra Jogger

6-pocket, encased elastic waistband with drawcord, mid-rise, front pockets with piped edge finish, double cargo pocket, elastic cuff jogger

Sizes: XXS - 5XL, I: 29"
XSP - 2XLP, I: 27"
XST - XLT, I: 31"
Leg Opening: 4.75"
Color shown: 23 Indigo



01 Black	G
08 New Royal	G
10 White	•NEW SU G
23 Indigo	G
40 Ciel	•NEW SU G
65 Wine	•NEW SP G
328 Bahama	•NEW SP G
905 Steel	G
2314 Driftwood	•NEW SP
2348 Fern	G

01 Black	G
08 New Royal	G
10 White	•NEW SU G
23 Indigo	G
40 Ciel	•NEW SU G
65 Wine	•NEW SP G
328 Bahama	•NEW SP G
905 Steel	G
2314 Driftwood	•NEW SP
2348 Fern	G

01 Black	G
08 New Royal	G
10 White	•NEW SU G
23 Indigo	G
40 Ciel	•NEW SU G
65 Wine	•NEW SP G
328 Bahama	•NEW SP G
905 Steel	G
2348 Fern	G

01 Black	G
08 New Royal	G
10 White	•NEW SU G
23 Indigo	G
40 Ciel	•NEW SU G
65 Wine	•NEW SP G
328 Bahama	•NEW SP G
905 Steel	G
2314 Driftwood	•NEW SP
2348 Fern	G

01 Black	G
08 New Royal	G
10 White	•NEW SU G
23 Indigo	G
40 Ciel	•NEW SU G
65 Wine	•NEW SP G
328 Bahama	•NEW SP G
905 Steel	G
2314 Driftwood	•NEW SP
2348 Fern	G

G denotes colors supported for Groups

All Styles Main Fabric

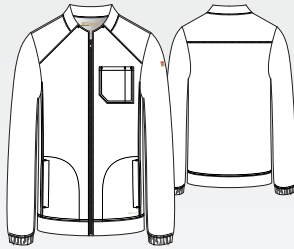
48% CiCLO Polyester / 44% Recycled Polyester / 8% Spandex



GSST179 Journey Top
 1-pocket, V-neck with piped edge finish, badge loop, inset chest pocket, high-low hem with notched side seam top
 Sizes: XS - 5XL, CB: 29"
 Color shown: 2348 Fern



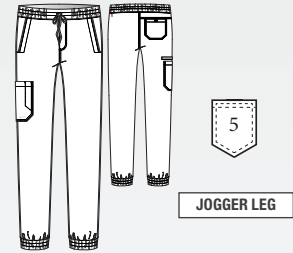
GSSW887 Cycle Warm-Up
 3-pocket, banded collar, zip-front, chest patch pocket with pen slot, side-entry waist pockets warm-up
 Sizes: XS - 5XL, CB: 29"
 Color shown: 23 Indigo



GSSP649 Highland Pant NEW
 5-pocket, textured plush elastic waistband with two-way drawcord, on-seam front pockets with shadow topstitching, inset cargo pocket with pen slot, inner thigh gusset, double back pocket slim straight pant
 Sizes: XS - 5XL, I: 32"
 XSS - 2XLS, I: 30"
 XST - XLT, I: 34"
 Leg Opening: 7.5"
 Color shown: 10 White



GSSP626 Voyager Jogger
 5-pocket, encased elastic waistband with drawcord, front pockets with piped edge finish, patch cargo pocket, half back yoke with inset pocket, elastic cuff jogger
 Sizes: XS - 5XL, I: 29"
 XSS - 2XLS, I: 27"
 XST - XLT, I: 31"
 Leg Opening: 5.25"
 Color shown: 08 New Royal



01 Black	•NEW SU
08 New Royal	
10 White	•NEW SU
23 Indigo	
40 Ciel	•NEW SU
65 Wine	•NEW SP
328 Bahama	•NEW SP
905 Steel	
2314 Driftwood	•NEW SP
2348 Fern	

01 Black	•NEW SU
08 New Royal	
10 White	•NEW SU
23 Indigo	
40 Ciel	•NEW SU
65 Wine	•NEW SP
328 Bahama	•NEW SP
905 Steel	
[Diagonal Stripes]	

01 Black	•NEW SU
08 New Royal	
10 White	•NEW SU
23 Indigo	
40 Ciel	•NEW SU
65 Wine	
328 Bahama	
905 Steel	
2314 Driftwood	
2348 Fern	

01 Black	•NEW SU
08 New Royal	
10 White	•NEW SU
23 Indigo	
40 Ciel	•NEW SU
65 Wine	•NEW SP
328 Bahama	•NEW SP
905 Steel	
2314 Driftwood	•NEW SP
2348 Fern	

G denotes colors supported for Groups

All Styles Main Fabric
 48% CiCLO Polyester / 44% Recycled Polyester / 8% Spandex



GREY'S ANATOMY™

abc signature

© ABC Signature

PROFESSIONAL WEAR
BY BARCO



THE ORIGINAL
CLASSICS AREN'T BORN, THEY'RE MADE.

*see product details on next page

Kira Top GRT049
Kira Jogger GRP534



Cora Top 41423



Cora Top 41423
Aubrey Pant 4275



Kira Top GRT049
Kira Jogger GRP534



GRT049 Kira Top

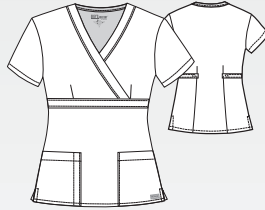
4-pocket, knit V-neck, love zipper pocket, love inside neck tape, knit sleeve hem, front and back princess seams top
 Sizes: XS - 3XL, CB: 25.5"
 Color shown: 65 Wine

Zipper:
 100% Nylon



4153 Riley Top

3-pocket, mock wrap with tab back
 Sizes: XXS - 5XL, CB: 25"
 Color shown: 23 Indigo



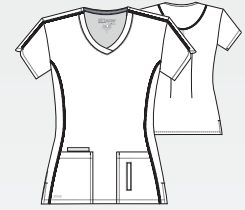
71166 Aubrey Top

2-pocket, V-neck with pen slot and Shirred back yoke
 Sizes: XS - 5XL, CB: 26"
 Color shown: 37 Hunter



41423 Cora Top

4-pocket, crossover V-neck with side panels, zipper pocket and tulip sleeve detail, fitted back
 Sizes: XXS - 5XL, CB: 25.5"
 Color shown: 328 Bahama



01 Black
08 New Royal
10 White
23 Indigo
37 Hunter
39 Teal
40 Ciel
65 Wine
328 Bahama
905 Steel

01 Black
08 New Royal
23 Indigo
37 Hunter
40 Ciel
905 Steel

01 Black
08 New Royal
23 Indigo
37 Hunter
40 Ciel
65 Wine
600 Scarlet
905 Steel

01 Black
08 New Royal
10 White
23 Indigo
37 Hunter
39 Teal
40 Ciel
65 Wine
328 Bahama
905 Steel

All Styles Main Fabric
 77% Polyester/23% Rayon

G denotes colors supported for Groups



4277 Mia Pant

6-pocket, flat front, knit elastic back waistband with drawcord, double cargo, back pockets mid-rise

Sizes: XXS - 5XL, I: 31.5"
 XXSP - 2XLP, I: 29.5"
 XXST - XLT, I: 33.5"
 Leg Opening: 8.5"
 Color shown: 905 Steel

Knit Accents Content:
 88% Polyester/12% Spandex



GRP534 Kira Jogger

5-pocket, tunnel drawcord waistband, mid-rise, double cargo with zipper pocket, tailored side seam knit cuff jogger

Sizes: XS - 3XL, I: 28"
 XSP - XLP, I: 26"
 XST - XLT, I: 30"
 Leg Opening: 4.5"
 Color shown: 39 Teal

Knit Accents Content:
 94% Polyester / 6% Spandex



4275 Aubrey Pant

3-pocket, logo plush elastic waistband pant with drawcord

Sizes: XXS - 5XL, I: 31"
 XXSP - XLP, I: 29"
 XXST - XLT, I: 33"
 Leg Opening: 8.5"
 Color shown: 01 Black



4232 Riley Pant

5-pocket, tie front elastic back, mid-rise flare leg

Sizes: XXS - 5XL, I: 31.5"
 XXSP - 2XLP, I: 29.5"
 XXST - XLT, I: 33.5"
 Leg Opening: 10"
 Color shown: 40 Ciel



01 Black	G
08 New Royal	G
10 White	G
23 Indigo	G
37 Hunter	G
39 Teal	G
40 Ciel	G
65 Wine	G
328 Bahama	G
905 Steel	G

01 Black	
08 New Royal	
10 White	
23 Indigo	
37 Hunter	
39 Teal	
40 Ciel	
65 Wine	
328 Bahama	
905 Steel	

01 Black	
08 New Royal	
23 Indigo	
37 Hunter	
40 Ciel	
65 Wine	
328 Bahama	
905 Steel	

01 Black	
08 New Royal	
23 Indigo	
37 Hunter	
40 Ciel	
905 Steel	

G denotes colors supported for Groups

All Styles Main Fabric
 77% Polyester/23% Rayon



GRT094 Lilah Maternity Top
 2-pocket, mock wrap empire line top with tie and fitted back
Sizes: XS - 2XL, CB:27"
Color shown: 23 Indigo



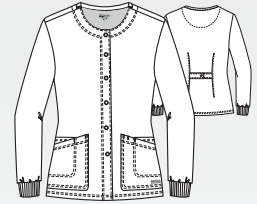
01 Black
08 New Royal
23 Indigo
905 Steel

GRP560 Lilah Maternity Pant
 1-pocket, knit maternity waistband with single cargo pocket pant
Sizes: XS - 2XL, I: 31"
Leg Opening: 8.625"
Color shown: 905 Steel



01 Black
08 New Royal
23 Indigo
905 Steel

4450 Jamie Warm-Up
 4-pocket, round neck warm-up with logo snaps and dyed-to-match knit cuffs with fitted back
Sizes: XS - 5XL, CB:28"
Color shown: 65 Wine



Knit Accents Content:
 100% Polyester

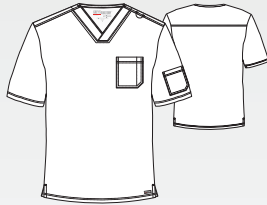
01 Black
08 New Royal
10 White
23 Indigo
37 Hunter
39 Teal
40 Ciel
65 Wine
328 Bahama
905 Steel

All Styles Main Fabric
 77% Polyester/23% Rayon



GRT091 Evan Top

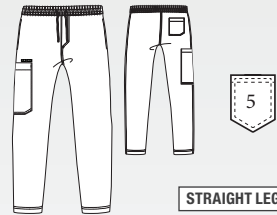
2-pocket, lapover V-neck, contrast badge loop at left shoulder, chest pocket with pen slot, single sleeve pocket with side vents
Sizes: XS - 5XL, CB: 29"
Color shown: 328 Bahama



01 Black	G
08 New Royal	G
10 White	G
23 Indigo	G
37 Hunter	G
39 Teal	G
40 Ciel	G
65 Wine	G
328 Bahama	G
905 Steel	G

GRP558 Evan Pant

5-pocket, full elastic waistband with contrast drawcord, front zip fly, both side entry hand pockets, one right back patch pocket, and one single double left cargo pocket
Sizes: XS - 5XL, I: 32"
XST - XLT, I: 34"
XSS-XLS, I: 30"
Leg Opening: 8.5"
Color shown: 08 New Royal



01 Black	G
08 New Royal	G
10 White	G
23 Indigo	G
37 Hunter	G
39 Teal	G
40 Ciel	G
65 Wine	G
328 Bahama	G
905 Steel	G

G denotes colors supported for Groups

All Styles Main Fabric
 77% Polyester/23% Rayon



BARCO[®]
one
heart • purpose • life

YOUR MOVE

MOVE TO THE NEXT DIMENSION
IN PERFORMANCE KNIT SCRUBS.

NEW COLOR
SUMMER



2015
Grenadine

*see product details on next page

Arena Warm-Up BOW896
Pro Jogger BOP631



Engage Top BOT210
Pro Jogger BOP631



Engage Top BOT210



Victory Top BOT209
Accelerate Top BOK804
Sprint Pant BOP645



PERFORMANCE KNIT COLLECTION - NEW

BOT210 Engage Top **NEW**

2-pocket, zip-neck with shirt collar, cuffed dolman sleeves, on-seam waist pockets, shirt tail hem top

Sizes: *XXS - 5XL, CB: 26"*

Color shown: *2015 Grenadine*



01 Black

23 Indigo

905 Steel

2015 Grenadine

BOT209 Victory Top **NEW**

2-pocket, banded V-neck with overlap, angled zipper waist pockets, straight hem top

Sizes: *XXS - 5XL, CB: 25.5"*

Color shown: *23 Indigo*



01 Black

23 Indigo

905 Steel

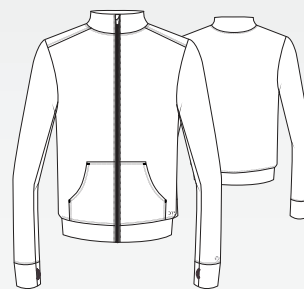
2015 Grenadine

BOW896 Arena Warm-Up **NEW**

2-pocket, banded collar, center front zipper, kangaroo-style waist pockets, self sleeve cuffs with thumb holes, warm-up

Sizes: *XXS - 5XL, CB: 23"*

Color shown: *905 Steel*



01 Black

23 Indigo

905 Steel

2015 Grenadine

Performance Knit Fabric

80% Recycled Polyester/20% Spandex



BOP645 Sprint Pant NEW

7-pocket, yoga-inspired waistband, high-rise, slanted front pockets, patch and zipper cargo pockets, on-seam back pockets, fit and flare pant

Sizes: *XXS - 5XL, I: 31.5"*

XXSP - XLP, I: 29.5"

XXST - XLT, I: 33.5"

Leg Opening: 10.5"

Color shown: 2015 Grenadine



- 01 Black
- 23 Indigo
- 905 Steel
- 2015 Grenadine

BOP631 Pro Jogger NEW

5-pocket, drawcord waistband, slanted front pockets, inset cargo pockets, clean back, self cuff jogger

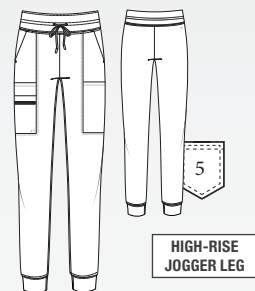
Sizes: *XXS - 5XL, I: 29"*

XXSP - XLP, I: 27"

XXST - XLT, I: 31"

Leg Opening: 4.375"

Color shown: 2015 Grenadine



- 01 Black
- 23 Indigo
- 905 Steel
- 2015 Grenadine

Performance Knit Fabric
80% Recycled Polyester/20% Spandex



BARCO[®]
one
heart • purpose • life



GEAR UP

LEVEL UP YOUR GAME WITH
SCRUBS BUILT FOR PERFORMANCE.

NEW COLOR
SPRING



2061
Wave Blue

NEW COLOR
SUMMER



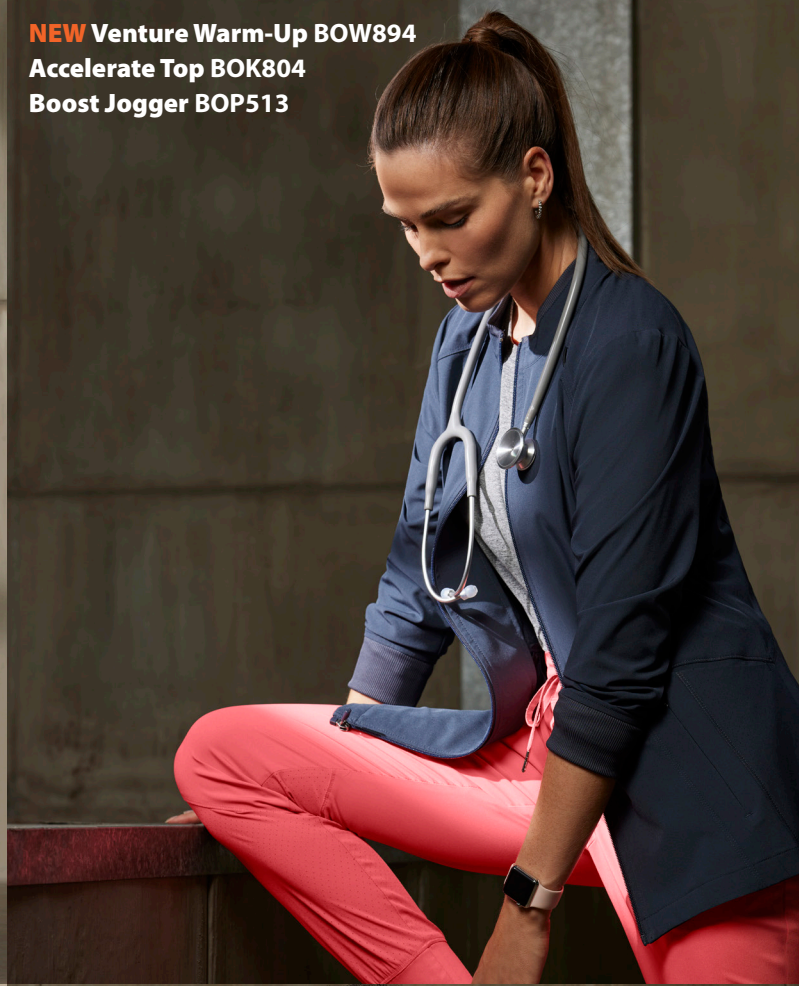
2351
Sunset Coral

*see product details on next page

Amplify Warm-Up BOW883
Surge Top BOK803
Amplify Pant 0217



NEW Venture Warm-Up BOW894
Accelerate Top BOK804
Boost Jogger BOP513



NEW Velocity Top BOT195
Amplify Pant 0217



Racer Top 5105
Accelerate Top BOK804
Boost Jogger BOP513



BOK804 Accelerate Top NEW

Women's long sleeve underscrub top
Pairs well with all Barco Brands.

Sizes: XXS - 5XL, CB: 25.5"

Color shown:

2330 Grey Heather

Fabric Content:

46% Recycled Polyester/

42% Polyester / 12% Spandex



01 Black	10 White
2330 Grey Heather	2331 Indigo Heather

5106 Pulse Top

5-pocket, shaped V-neck with sporty seaming, perforated panels in front and back

Sizes: XXS - 5XL, CB: 25.5"

Color shown: 328 Bahama



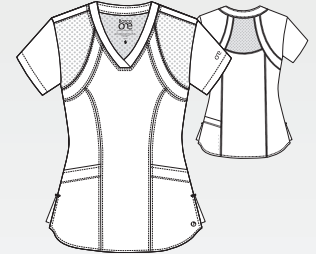
01 Black	G
08 New Royal	G
23 Indigo	G
37 Hunter	G
39 Teal	G
40 Ciel	G
65 Wine	G
114 Cobalt	G
328 Bahama	G
905 Steel	G
[Diagonal Stripes]	

5105 Racer Top

4-pocket, V-neck with princess seaming and perforated panel details in front and back

Sizes: XXS - 5XL, CB: 25.5"

Color shown: 2061 Wave Blue



01 Black	G
08 New Royal	G
23 Indigo	G
37 Hunter	G
39 Teal	G
40 Ciel	G
65 Wine	G
114 Cobalt	G
328 Bahama	G
905 Steel	G
2061 Wave Blue	•NEW SP
2351 Sunset Coral	•NEW SU

All Styles Main Fabric

50% Polyester/43% Recycled Polyester/7% Spandex

G denotes colors supported for Groups



BOW894 Venture Warm-Up NEW

4-pocket, banded collar with rib knit facing, badge loop, front and back princess seams, angled top-entry pockets and hidden zipper pockets, zip-front warm-up
 Sizes: XXS - 5XL, CB: 26"
 Color shown: 23 Indigo



BOP513 Boost Jogger

3-pocket, double elastic waist with drawcord and perforated blocked detail leg
 Sizes: XXS - 5XL, I: 30.5"
 XXSP - XLP, I: 28.5"
 XXST - XLT, I: 33.5"
 Leg Opening: 5.125"
 Color shown: 2351 Sunset Coral



Knit Accents Content:
 88% Polyester/12% Spandex

BOP597 Uplift Pant

5-pocket, knit waistband with drawcord, front and back welt pockets, single double cargo pocket, perforated hip and leg panels.
 Sizes: XXS - 5XL, I: 30"
 XXSP - XLP, I: 28"
 XXST - XLT, I: 32"
 Leg Opening: 6.75"
 Color shown: 328 Bahama



Knit Accents Content:
 88% Polyester/12% Spandex

5206 Stride Pant

5-pocket, yoga pant with cargo pocket, knit waistband and drawcord
 Sizes: XXS - 5XL, I: 31.5"
 XXSP - XLP, I: 29.5"
 XXST - XLT, I: 33.5"
 Leg Opening: 8.25"
 Color shown: 65 Wine



Knit Accents Content:
 88% Polyester/12% Spandex

01 Black
08 New Royal
23 Indigo
37 Hunter •NEW SU
39 Teal •NEW SU
40 Ciel •NEW SU
65 Wine
114 Cobalt •NEW SU
328 Bahama
905 Steel
Diagonal stripes

01 Black
08 New Royal
23 Indigo
37 Hunter
39 Teal
40 Ciel
65 Wine
114 Cobalt
328 Bahama
905 Steel
2061 Wave Blue •NEW SP
2351 Sunset Coral •NEW SU

01 Black
08 New Royal
23 Indigo
37 Hunter •NEW SP
Diagonal stripes
40 Ciel •NEW SU
65 Wine
Diagonal stripes
328 Bahama
905 Steel
Diagonal stripes

01 Black
08 New Royal
23 Indigo
37 Hunter
39 Teal
40 Ciel
65 Wine
114 Cobalt
328 Bahama
905 Steel
Diagonal stripes

denotes colors supported for Groups

All Styles Main Fabric
 50% Polyester/43% Recycled Polyester/7% Spandex



BOK803 Surge Top NEW

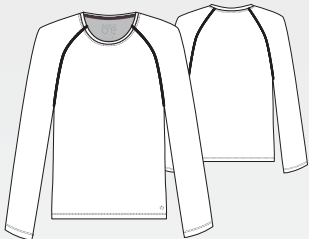
Men's long sleeve underscrub top
Pairs well with all Barco Brands.

Sizes: XS - 5XL, CB: 27.5"

Color shown: 2331 Indigo Heather

Fabric Content:

46% Recycled Polyester/
42% Polyester/12% Spandex

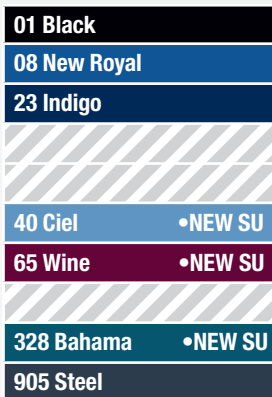
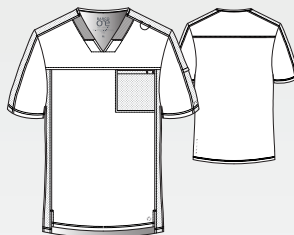


BOT195 Velocity Top NEW

2-pocket V-neck with inset rib knit, badge loop, shoulder and sleeve panels, on-seam sleeve pocket, inset chest pocket with pen slot, high-low hem top

Sizes: XS - 5XL, CB: 29.5"

Color shown: 08 New Royal



0115 Men's Amplify Top

5-pocket V-neck with raglan sleeve details, hidden pocket and chest pocket with a secure zip media pocket

Sizes: XS - 5XL, CB: 30"

Color shown: 328 Bahama

All zippers are black



All Styles Main Fabric

50% Polyester/43% Recycled Polyester/7% Spandex

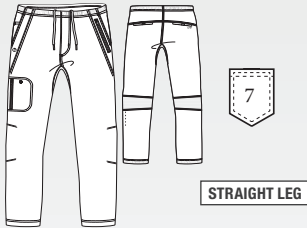
G denotes colors supported for Groups



0217 Men's Amplify Pant

7-pocket, elastic waist cargo with drawcord, back perforated knee panels and functional zip fly front with gusseted inseam

Sizes: XS - 5XL, I: 32"
 ST - XLT, I: 34"
 XSS - 3XLS, I: 30"
 Leg Opening: 7.5"
 Color shown: 65 Wine

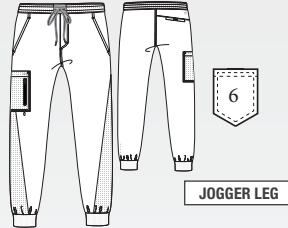


01 Black	G
08 New Royal	G
23 Indigo	G
37 Hunter	G
39 Teal	G
40 Ciel	G
65 Wine	G
114 Cobalt	G
328 Bahama	G
905 Steel	G

BOP520 Men's Vortex Pant

6-pocket, drawcord full elastic waistband, single zip double cargo, inside coin pocket and perforated details jogger

Sizes: XS - 5XL, I: 30"
 ST - XLT, I: 32"
 XSS - 3XLS, I: 28"
 Leg Opening: 5.25"
 Color shown: 114 Cobalt

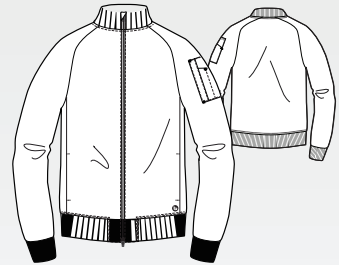


01 Black	G
08 New Royal	G
23 Indigo	G
37 Hunter	G
65 Wine	G
114 Cobalt	G
328 Bahama	G
905 Steel	G

BOW883 Amplify Warm-Up

3-pocket bomber, knit neck and knit cuffs on raglan sleeves, 2-way zipper with cover, secure zip closure shoulder pocket with pen slots warm-up

Sizes: XS - 5XL, CB: 28"
 Color shown: 23 Indigo



01 Black	G
23 Indigo	G

Knit Accents Content:
 94% Polyester/6% Spandex

G denotes colors supported for Groups

All Styles Main Fabric
 50% Polyester/43% Recycled Polyester/7% Spandex



New
SPRING
Prints



BARCO
one
heart • purpose • life

All Styles Main Fabric
50% Polyester
43% Recycled Polyester
7% Spandex

5107-CRIC
Cracked Ice NEW
4-pocket, V-neck with
front and back
princess seams
Sizes: *XXS - 5XL*
CB: 25.5"

Coordinating colors:

01 Black	08 New Royal
10 White	40 Ciel
2061 Wave Blue	

5107-ULRA
Ultra Radiant NEW
4-pocket, V-neck with
front and back
princess seams
Sizes: *XXS - 5XL*
CB: 25.5"

Coordinating colors:

01 Black	08 New Royal
10 White	905 Steel
2061 Wave Blue	2351 Sunset Coral



5107-MARW
Marble Wave **NEW**

4-pocket, V-neck with front and back princess seams
 Sizes: *XXS - 5XL*
 CB: 25.5"

Coordinating colors:



5107C-MARO
Magnetic Rouse **NEW**

4-pocket, V-neck with front and back princess seams
 Sizes: *XXS - 5XL*
 CB: 25.5"

Coordinating colors:



All Styles Main Fabric
 50% Polyester
 43% Recycled Polyester
 7% Spandex

New
SUMMER
Prints

BARCO
one
heart • purpose • life

All Styles Main Fabric
50% Polyester
43% Recycled Polyester
7% Spandex



5107-SUMB
Summer Brilliance **NEW**
4-pocket, V-neck with front and
back princess seams
Sizes: *XXS - 5XL*
CB: 25.5"

Coordinating colors:

01 Black	10 White
905 Steel	2351 Sunset Coral



5107-AULI

Aurora Lights NEW

4-pocket, V-neck with front and back princess seams

Sizes: XXS - 5XL
CB: 25.5"

Coordinating colors:

01 Black	08 New Royal
23 Indigo	40 Ciel
2351 Sunset Coral	

5107-ELZE

Electric Zebra NEW

4-pocket, V-neck with front and back princess seams

Sizes: XXS - 5XL
CB: 25.5"

Coordinating colors:

01 Black	08 New Royal
10 White	40 Ciel
2351 Sunset Coral	

BARCO
one
heart • purpose • life

All Styles Main Fabric
50% Polyester
43% Recycled Polyester
7% Spandex

BARCO
UNIFY 



**ALL
TOGETHER**
HEALTHCARE IS A TEAM SPORT.

NEW COLOR
SPRING



1876
Light Peach

*see product details on next page

Surge Top BOK803
Cruise Pant BUP628



Purpose Top BUT167
Union Jogger BUP647



Rally Warm-Up BUW881
Rally Top BUT153
Cruise Pant BUP628



Mission Top BUT163
NEW Union Jogger BUP647



BUT167 Purpose Top

4-pocket, V-neckline, shoulder contrast badge loop, zip pocket PDA, tool strip detail at front pockets

Sizes: *XXS-5XL, CB: 25.5"*
Color shown: 23 Indigo

BUT163 Mission Top

1-pocket, Henley style neckline, dyed-to-match button placket, welt chest pocket, straight hem, tuck in style top

Sizes: *XXS-5XL, CB: 26.5"*
Color shown: 40 Ciel

BUW884 Team Warm-Up

3-pocket low funnel neckline, princess seams, dyed-to-match zip placket, shoulder contrast badge loop, front pockets, welt sleeve PDA, back waist detail, rib cuff sleeves jacket

Sizes: *XS-5XL, CB: 26"*
Color shown: 10 White

BUP647 Union Jogger **NEW**

5-pocket, encased elastic waistband with drawcord, mid-rise, angled welt front pockets, double cargo pocket, back patch pocket, rib knit cuff jogger

Sizes: *XXS-5XL, I: 29"*
XSP-XLP, I: 27"
ST-XLT, I: 31"
Leg Opening: 4.375"
Color shown: 1876 Light Peach

BUP601 Purpose Pant

5-pocket, high-rise slim pant, flat front waistband with interior drawcord, dyed-to-match zip front pockets, double cargo PDA pocket, back pocket pant

Sizes: *XXS-5XL, I: 30.5"*
XXSP-XLP, I: 28.5"
ST-XLT, I: 32.5"
Leg Opening: 6.75"
Color shown: 328 Bahama



01 Black	G
08 New Royal	G
10 White	G
23 Indigo	G
40 Ciel	G
65 Wine	G
312 Olive	
328 Bahama	G
905 Steel	G
1876 Light Peach •NEW SP	

01 Black	G
08 New Royal	G
10 White	G
23 Indigo	G
40 Ciel	G
65 Wine	G
312 Olive	
328 Bahama	G
905 Steel	G
1876 Light Peach •NEW SP	

01 Black	G
08 New Royal	G
10 White	G
23 Indigo	G
40 Ciel	G
65 Wine	G
312 Olive	
328 Bahama	G
905 Steel	G
1876 Light Peach •NEW SP	

01 Black	G
08 New Royal	G
10 White	•NEW SU
23 Indigo	
40 Ciel	•NEW SU
65 Wine	
328 Bahama	
905 Steel	
1876 Light Peach •NEW SP	

01 Black	G
08 New Royal	G
10 White	G
23 Indigo	G
40 Ciel	G
65 Wine	G
312 Olive	
328 Bahama	G
905 Steel	G
1876 Light Peach •NEW SP	

All Styles Main Fabric

71% Polyester/24% Rayon/5% Spandex twill

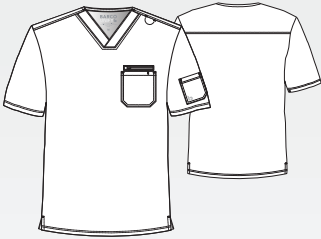
G denotes colors supported for Groups



BUT153 Rally Top

3-pocket, banded V-neck, shoulder contrast badge loop, dyed-to-match zip chest pocket and patch pocket with pen slots, sleeve pocket, straight hem top

Sizes: XS-5XL, CB: 29"
Color shown: 312 Olive



01 Black	G
08 New Royal	G
10 White	G
23 Indigo	G
40 Ciel	G
65 Wine	G
312 Olive	G
328 Bahama	G
905 Steel	G

BUW881 Rally Warm-Up

4-pocket, rib trimmed mock neck, dyed-to-match zip placket, hidden zip chest pockets, kanga-style front pockets, cuff sleeve jacket

Sizes: XS-5XL, CB: 29"
Color shown: 08 New Royal

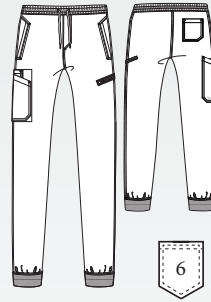


01 Black	G
08 New Royal	G
10 White	G
23 Indigo	G
40 Ciel	G
65 Wine	G
328 Bahama	G
905 Steel	G

BUP602 Rally Jogger

6-pocket elastic waistband with drawcord, front zip fly, L shaped welt pocket, double single cargo pocket with dyed-to-match zip pocket, back pocket, rib cuff jogger

Sizes: XS-5XL, I: 29"
SS-XLS, I: 27"
ST-XLT, I: 31"
Leg Opening: 4.75"
Color shown: 23 Indigo



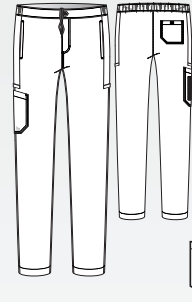
JOGGER LEG

01 Black	G
08 New Royal	G
10 White	G
23 Indigo	G
40 Ciel	G
65 Wine	G
312 Olive	G
328 Bahama	G
905 Steel	G

BUP628 Cruise Pant

7-pocket, button waistband with inside drawcord and encased elastic at back, zip fly, on-seam front pockets, side panels with angled welt cargo pockets, top entry patch cargo pocket with additional vertical zip pocket, back patch pocket with velcro closure, slim straight pant

Sizes: XS-5XL, I: 32"
SS-XLS, I: 30"
ST-XLT, I: 34"
Leg Opening: 7.25"
Color shown: 905 Steel



STRAIGHT LEG

01 Black	G
08 New Royal	G
10 White	•NEW SU
23 Indigo	G
40 Ciel	•NEW SU
65 Wine	•NEW SP
328 Bahama	•NEW SP
905 Steel	G

G denotes colors supported for Groups

All Styles Main Fabric
71% Polyester/24% Rayon/5% Spandex twill



SKECHERS
by Barco™



COLORFUL COMFORT

FALL IN LOVE WITH YOUR PERFECT MATCH.

NEW COLOR
SPRING



2301
Vibrance Pink

*see product details on next page

Plumeria Dreams Top SKT174
Theory Jogger SKP552



NEW Thesis Top SKT193
Structure Jogger SKP572



Shimmering Top SKT174
Reliance Pant SK201



NEW Thesis Top SKT193
Structure Pant SK0215



SKT147 Dignity Tuck-In Top

1-pocket, V-neck with contrast rib, front yoke seam with badge loop, single chest pocket, high-low hem tuck-in top

Sizes: XXS - 5XL, CB: 26"
Color shown:
2301 Vibrance Pink



01 Black	G
08 New Royal	G
10 White	G
18 Pewter	G
37 Hunter	G
39 Teal	G
40 Ciel	G
41 Navy	G
65 Wine	G
[Diagonal Stripes]	
328 Bahama	G
471 Moonstruck	G
503 Galaxy	•NEW SP
[Diagonal Stripes]	
[Diagonal Stripes]	
[Diagonal Stripes]	
[Diagonal Stripes]	
2301 Vibrance Pink	•NEW SP

SK102 Reliance Top

3-pocket, V-neck surplice with front princess seams, side vent detail, contrast back neck binding

Sizes: XXS - 5XL, CB: 25.5"
Color shown: 1277 Eggplant



01 Black	G
08 New Royal	G
10 White	G
18 Pewter	G
37 Hunter	G
39 Teal	G
40 Ciel	G
41 Navy	G
65 Wine	G
230 Khaki	G
328 Bahama	G
[Diagonal Stripes]	
503 Galaxy	G
1276 New Grape	G
1277 Eggplant	G
1295 True Red	G
1659 New Turquoise	G
[Diagonal Stripes]	

SK101 Breeze Top

3-pocket, virtual V-neck, shaped hem, detailed cover stitching, contrast back neck binding

Sizes: XXS - 5XL, CB: 25.5"
Color shown: 328 Bahama



01 Black	G
08 New Royal	G
10 White	G
18 Pewter	G
37 Hunter	G
39 Teal	G
40 Ciel	G
41 Navy	G
65 Wine	G
230 Khaki	G
328 Bahama	G
471 Moonstruck	G
503 Galaxy	G
1276 New Grape	G
1277 Eggplant	G
1295 True Red	G
1659 New Turquoise	G
2301 Vibrance Pink	•NEW SP

SK401 Stability Warm-Up

2-pocket, round neck, snap front closure, dyed-to-match seamless knit sock cuff sleeves, contrast back neck binding

Sizes: XS - 5XL, CB: 27"
Color shown: 417 Moonstruck



01 Black	G
08 New Royal	G
10 White	G
18 Pewter	G
37 Hunter	G
39 Teal	G
40 Ciel	G
41 Navy	G
65 Wine	G
230 Khaki	G
328 Bahama	G
471 Moonstruck	G
503 Galaxy	G
1276 New Grape	G
1277 Eggplant	G
1295 True Red	G
1659 New Turquoise	G
2301 Vibrance Pink	•NEW SP

Seamless Cuff: 100% Polyester

All Styles Main Fabric
54% Polyester/40% Recycled Polyester/6% Spandex

G denotes colors supported for Groups



SKP552 Theory Jogger

4-pocket, drawcord waistband mid-rise, with double cargo pocket and pen slot

Sizes: XXS - 5XL, I: 29"
 XXSP - XLP, I: 27"
 XST - XLT, I: 31"
 Leg Opening: 4.5"
 Color shown: 39 Teal

Knit Accents Content:
 88% Polyester/12% Spandex



01 Black	G
08 New Royal	G
10 White	G
18 Pewter	G
37 Hunter	G
39 Teal	G
40 Ciel	G
41 Navy	G
65 Wine	G
230 Khaki	G
328 Bahama	G
471 Moonstruck	G
503 Galaxy	•NEW SP
1295 True Red	G
2301 Vibrance Pink	•NEW SP

SK201 Reliance Pant

3-pocket, flat front with tape tie, branded, inside logo plush elastic waistband, cargo pocket

Sizes: XXS - 5XL, I: 31.5"
 XXSP - 2XLP, I: 29.5"
 XXST - XLT, I: 33.5"
 Leg Opening: 8.5"
 Color shown: 65 Wine

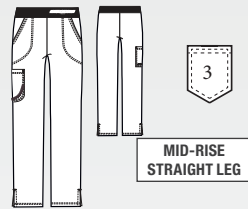


01 Black	G
08 New Royal	G
10 White	G
18 Pewter	G
37 Hunter	G
39 Teal	G
40 Ciel	G
41 Navy	G
65 Wine	G
230 Khaki	G
328 Bahama	G
471 Moonstruck	G
503 Galaxy	G
1276 New Grape	G
1277 Eggplant	G
1295 True Red	G
1659 New Turquoise	G
2301 Vibrance Pink	•NEW SP

SK202 Breeze Pant

3-pocket, logo plush elastic waistband, cargo pocket

Sizes: XXS - 5XL, I: 31.5"
 XXSP - 2XLP, I: 29.5"
 XXST - XLT, I: 33.5"
 Leg Opening: 7.75"
 Color shown: 08 New Royal



01 Black	G
08 New Royal	G
10 White	G
18 Pewter	G
37 Hunter	G
39 Teal	G
40 Ciel	G
41 Navy	G
65 Wine	G
230 Khaki	G
328 Bahama	G
503 Galaxy	G
1276 New Grape	G
1277 Eggplant	G
1295 True Red	G
1659 New Turquoise	G

SKP623 Gamma Pant

6-pocket, encased elastic waistband with drawcord, trouser front pockets, double cargo pocket, back patch pockets, forward leg seam, hem vent with logo tape, tapered leg pant

Sizes: XXS - 5XL, I: 30"
 XXSP - XLP, I: 28"
 XST - XLT, I: 32"
 Leg Opening: 7"
 Color shown: 41 Navy



01 Black	
08 New Royal	
10 White	•NEW SU
18 Pewter	
40 Ciel	•NEW SP
41 Navy	
65 Wine	•NEW SP
328 Bahama	•NEW SP

G denotes colors supported for Groups

All Styles Main Fabric
 54% Polyester/40% Recycled Polyester/6% Spandex



SKT193 Thesis Top NEW

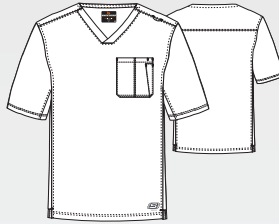
3-pocket, rounded neckline, jersey knit neck band, badge loop, inset chest pocket with pen slot, waist patch pockets, high-low hem top
 Sizes: XS - 5XL CB: 29.5"
 Color shown: 10 White



01 Black
08 New Royal
10 White
18 Pewter
41 Navy
328 Bahama •NEW SU

SK0112 Structure Top

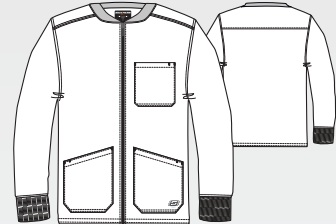
1-pocket, crossover V-neck top with chest pocket, full running side step-cut side vent detail
 Sizes: XS - 5XL, CB: 29.5"
 Color shown: 471 Moonstruck



01 Black	G
08 New Royal	G
10 White	G
18 Pewter	G
37 Hunter	G
39 Teal	G
40 Ciel	G
41 Navy	G
65 Wine	G
230 Khaki	G
328 Bahama	G
471 Moonstruck	G
503 Galaxy	G
1276 New Grape	G
1277 Eggplant	G
1295 True Red	G

SK0408 Structure Warm-Up

3-pocket, rib collar and cuffs, with zip front closure
 Sizes: XS - 5XL, CB: 30"
 Color shown: 41 Navy



Seamless Cuff:
 80% Polyester/20% spandex knit
 Dyed-to-match Zippers

01 Black	G
08 New Royal	G
10 White	G
18 Pewter	G
37 Hunter	G
39 Teal	G
40 Ciel	G
41 Navy	G
65 Wine	G
230 Khaki	G
328 Bahama	G
471 Moonstruck	G
503 Galaxy	G
1276 New Grape	G
1277 Eggplant	G
1295 True Red	G

All Styles Main Fabric
 54% Polyester/40% Recycled Polyester/6% Spandex

G denotes colors supported for Groups

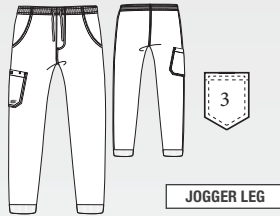


SKP572 Structure Jogger

3-pocket, self full encased elastic waistband with drawcord, front fly, velcro closure single patch cargo pocket, rib cuff jogger

Sizes: XS - 3XL, I: 29"
 SS - XLS, I: 27"
 Leg Opening: 4.5"
 Color shown: 40 Ciel

Knit Accents Content:
 94% Polyester/6% Spandex



01 Black	G
08 New Royal	G
18 Pewter	G
40 Ciel	G
41 Navy	G
65 Wine	G
328 Bahama	G

SK0215 Structure Pant

4-pocket, full elastic waistband drawcord, inseam gusset, cargo pocket

Sizes: XS - 5XL, I: 32"
 XSS - XLS, I: 30"
 ST - XLT, I: 34"
 Leg Opening: 8.5"
 Color shown: 37 Hunter



01 Black	G
08 New Royal	G
10 White	G
18 Pewter	G
37 Hunter	G
39 Teal	G
40 Ciel	G
41 Navy	G
65 Wine	G
230 Khaki	G
328 Bahama	G
471 Moonstruck	G
503 Galaxy	G
1276 New Grape	G
1277 Eggplant	G
1295 True Red	G

G denotes colors supported for Groups

All Styles Main Fabric
 54% Polyester/40% Recycled Polyester/6% Spandex



New SPRING Prints



Eco-Friendly
Fabric

SKECHERS
by Barco™

All Styles Main Fabric
54% Polyester
40% Recycled Polyester
6% Spandex

**SKT174-PLMD
Plumeria Dreams NEW**

1-pocket V-neck with contrast
rib, front yoke seam with badge
loop, single chest pocket, high-
low hem tuck-in top

Sizes: XXS - 5XL

CB: 26"

Coordinating color:

2301 Vibrance Pink



Eco-Friendly
Fabric

Coordinating colors:

08 New Royal

1659 New Turquoise

2301 Vibrance Pink

SKT174-SHMR
Shimmering NEW

1-pocket V-neck with contrast
rib, front yoke seam with badge
loop, single chest pocket, high-
low hem tuck-in top

Sizes: XSS - 5XL

CB: 26"



All Styles Main Fabric

54% Polyester

40% Recycled Polyester

6% Spandex

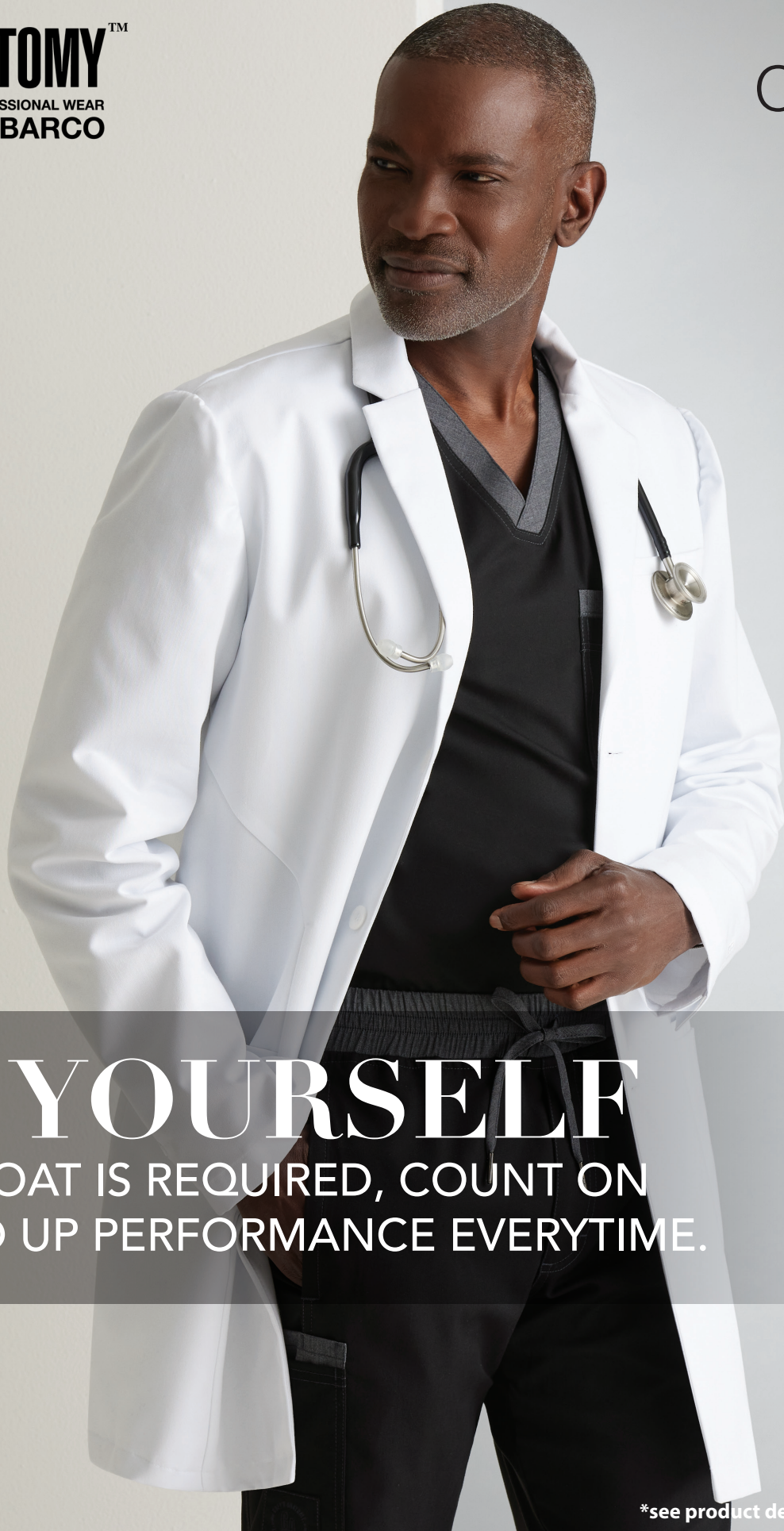
GREY'S ANATOMY™

abc signature

© ABC Signature

PROFESSIONAL WEAR
BY BARCO

**LAB
COATS**



SUIT YOURSELF

WHEN A COAT IS REQUIRED, COUNT ON
BUTTONED UP PERFORMANCE EVERYTIME.

*see product details on next page

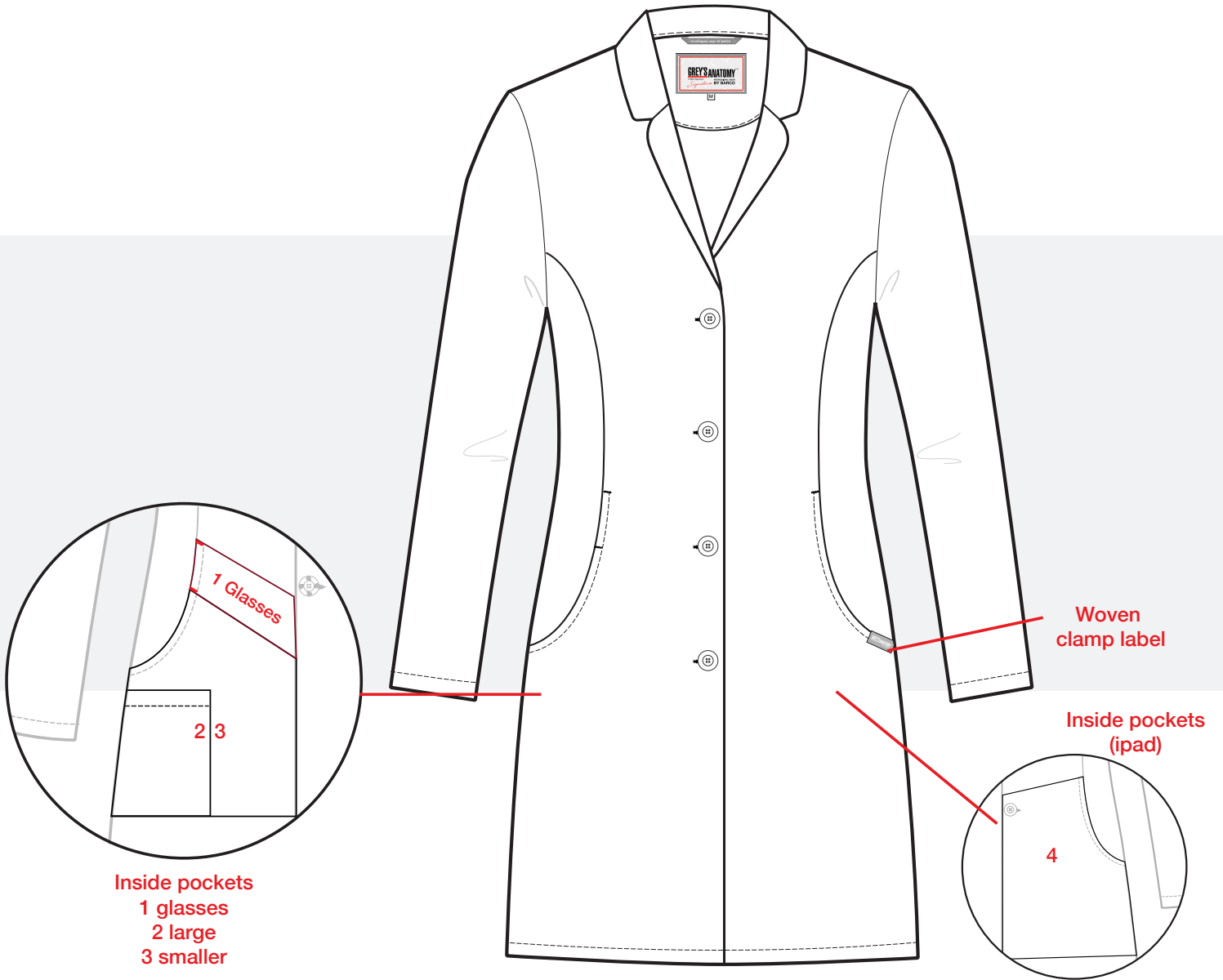
NEW Penelope Lab Coat GNC960



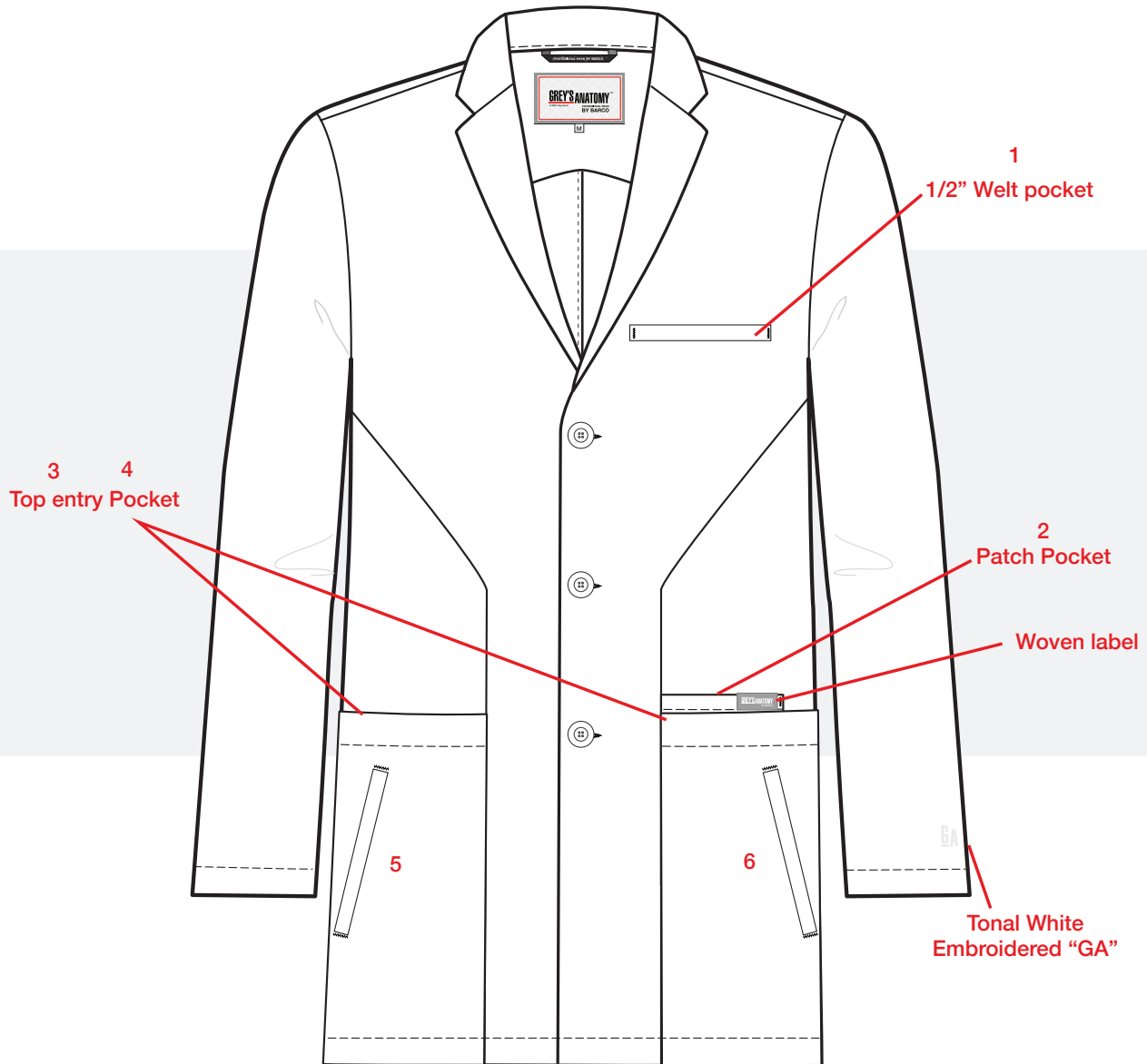
NEW Derek Lab Coat GRC962



GNC960
NEW Penelope Lab Coat



GRC962
NEW Derek Lab Coat



GNC960 Penelope NEW

Women's 4-pocket long sleeve notch lapel lab coat, angled front yoke with on-seam pocket and pen slots, half-circle front princess seams with curved on-seam pockets, and back princess seams with vents
 Sizes: XXS-XL
 Length*: 35"
 Sleeve length: 24-25.25"



2405 Brooke

Women's round notch collar lab coat, with 2 front pockets, 1 chest pocket, pen slot, and loose back 3 button adjustable back belt.
 Sizes: XXS-5XL
 Length*: 32"
 Sleeve length: 24.5"
 Buttons: 3



GNC001 Eve

Women's lab coat with 2 front pockets, long sleeve, princess front and back with 2 back vents
 Sizes: XS-3XL
 Length*: 34"
 Sleeve length: 24.5"
 Buttons: 3



2402 Morgan

Women's lab coat with 2 front pockets, back sewn down belt, and front and back princess seams.
 Sizes: XXS-3XL
 Length*: 35"
 Sleeve length: 24.5"
 Buttons: 3



Fabric Content

75% Polyester / 20% Rayon / 5% Spandex Twill
 WITH 4-WAY STRETCH



GRC962 Derek **NEW**

Men's 6-pocket long sleeve notch lapel lab coat, welt chest pocket, angled front body seams with top-entry waist pockets, angled welt hand pockets, angled back yoke seam, extended vent opening at the side seams, and vented sleeve opening with 2-button closure

Sizes: 34-56

Length*: 35"

Sleeve length: 26.375-28.375"

GRC962L

Sizes: 36-48L, 50-56L

Length*: 39"

Sleeve length: 27.625-29.375"

Buttons: 3



0914 Noah

Men's lab coat with tablet pockets, inside larger pockets, chest pocket with pen slots center back French seam, and extra length vent.

Sizes: 32-56

Length*: 37"

Sleeve length: 24.75"

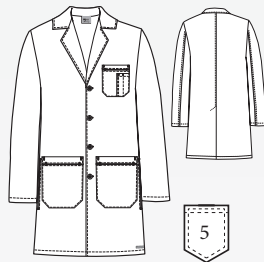
0914L

Sizes: 36-48L, 50-56L

Length*: 41"

Sleeve length: 25.75"

Buttons: 4



4481 Lily

Women's lab coat with princess seamed front, up dated rounded collar, inset belt, loose button back belt, and back vent.

Sizes: XS-5XL

Length*: 34"

Sleeve length: 23.75"

Buttons: 4



7446 Hannah

Women's lab coat with waist seam, front and back tapered darts, and back vent.

Sizes: XXS-5XL

Length*: 31.5"

Sleeve length: 23.5"

Buttons: 3



Fabric Content

80% Polyester / 20% Cotton Peached Twill





Barco's
NightingalesSM
Foundation
Keeping Hope Alive

In honor of the healthcare professionals who go above and beyond to make a difference in our lives, Barco's Nightingales Foundation provides critical resources to children in need. Since 2020, our Foundation has focused its efforts on Haiti, which has the highest hunger rates in the Western hemisphere. Our two dedicated teams make monthly trips to remote villages near our 7 solar wells, traversing rough terrain to deliver food to 6,000 families in hard-to-reach, underserved areas.

Because of your continued support, we're unwavering in our mission to keep hope alive. Thank you for helping to make a difference.

BARCO
Made to Matter

barcosnightingales.org