

Summer 2024



**WHITE CROSS**

# Designed and crafted for exceptional individuals.

At White Cross, we know that healthcare professionals are often called upon to be exceptional. That's why we aim to make our garments exceptional too. Since our foundation in Montreal in the early 20th century, our scrubs have been a cut above.

Today, inspired by the passion of three generations of the Lutfy family, we're dedicated to matching the achievements of our incredible customers with garments that truly go the distance. By doing so, we're able to offer world-class products for individuals who expect the very best from their working wardrobe.

A photograph of three healthcare professionals (two women and one man) standing in front of a lush green hedge. They are all wearing dark blue, short-sleeved V-neck scrubs and matching dark blue pants. The man on the left is wearing white sneakers and has a stethoscope around his neck. The woman in the middle is also wearing white sneakers and has her hands in her pockets. The woman on the right is wearing white sneakers and has a stethoscope around her neck. The background is a dense green hedge, and the ground is grass.

**WHITE CROSS**



C R ■ ■  
F T ■ ■

**COMFORT. RESPONSIBILITY.  
FIT. TECHNOLOGY.**

Since 1915, White Cross has been crafting fine quality uniforms for exceptional individuals. But as we move into our second century, we're pushing our craft further, exploring spring 2024 frontiers in comfort, quality and sustainability, and harnessing our craft to make positive change for our community and our industry.



WT127

**WOMEN'S 3-POCKET V-NECK TOP**

- Modern Fit
- 3 Pockets
- Fluid Resistant

**DETAILS**

- 1 zipper pocket
- 2 welt pockets
- Back side knit panels
- Detailed V-neckline
- Side vents

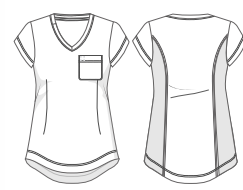
**FABRIC**

60% Recycle Polyester,  
34% Viscose from  
Bamboo, 6% Spandex

CONTRAST FABRIC:  
91% Recycled Polyester,  
9% Spandex

**SIZES**    XXS-XL, 1XL-3XL  
Fashion Colors: XS-XL, 1XL-2XL  
Size Small Length: 25"

- COLORS**
- Black BLK
  - Navy Nvy
  - Pewter PEWT
  - Royal ROYL
  - Ceileste CLST
  - Wine WINE<sup>NEW</sup>
  - \*Sage Leaf SGLF<sup>SPRING 2024</sup>
  - \*Peach Blossom/Black PHBK<sup>SPRING 2024</sup>
  - \*Black/Peach Blossom BKPH<sup>SPRING 2024</sup>
  - \*Poolside PLSD<sup>SUMMER 2024</sup>



WT128

**WOMEN'S 1-POCKET V-NECK TOP**

- Modern Fit
- 1 Pocket
- Fluid Resistant

**DETAILS**

- 1 chest pocket
- Cap sleeves
- Back side knit panels
- Front princess darts
- Back princess seams
- Shirttail hem for easy tuck-in option

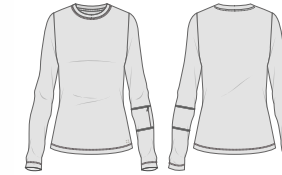
**FABRIC**

60% Recycle Polyester,  
34% Viscose from  
Bamboo, 6% Spandex

CONTRAST FABRIC:  
91% Recycled Polyester,  
9% Spandex

**SIZES**    XXS-XL, 1XL-3XL  
Fashion Colors: XS-XL, 1XL-2XL  
Size Small Length: 26"

- COLORS**
- Black BLK
  - Navy Nvy
  - Pewter PEWT
  - Royal ROYL
  - Ceileste CLST
  - Wine WINE<sup>NEW</sup>
  - \*Sage Leaf SGLF<sup>SPRING 2024</sup>
  - \*Peach Blossom PHBM<sup>SPRING 2024</sup>
  - \*Poolside PLSD<sup>SUMMER 2024</sup>



WT130

**WOMEN'S 1-POCKET LONG-SLEEVE TEE**

- Modern Fit
- 1 Pocket
- Fluid Resistant

**DETAILS**

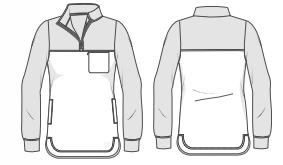
- 1 hidden zipper forearm pocket on wearer's left sleeve

**FABRIC**

95% Recycled Polyester,  
5% Spandex FSY107

**SIZES**    All Colors: XS-XL, 1XL-2XL  
Size Small Length: 25"

- COLORS**
- Black BLK
  - Navy Nvy
  - Pewter PEWT
  - Royal ROYL
  - Ceileste CLST
  - Wine WINE<sup>NEW</sup>
  - White WHT<sup>SPRING 2024</sup>
  - \*Sage Leaf SGLF<sup>SPRING 2024</sup>
  - \*Peach Blossom PHBM<sup>SPRING 2024</sup>
  - \*Poolside PLSD<sup>SUMMER 2024</sup>



WT133

**WOMEN'S 3-POCKET QUARTER-ZIP PULLOVER TOP**

- Modern Fit
- 3 Pockets
- Fluid Resistant

**DETAILS**

- 1 hidden zipper chest pocket
- 2 hip pockets
- Quarter-zip-front closure
- Rib-knit neckline, yoke, and sleeves
- Curved hemline

**FABRIC**

65% Recycle Polyester,  
25% Viscose from  
Bamboo, 10% Spandex

CONTRAST FABRIC:  
92% Recycled Polyester,  
8% Spandex

**SIZES**    XS-XL; 1XL-3XL  
Size Small Length: 27"

- COLORS**
- Black BLK
  - Navy Nvy



WB430  
**WOMEN'S 6-POCKET JOGGER PANTS**

- Modern Fit
- 6 Pockets
- Fluid Resistant

DETAILS	FABRIC
<ul style="list-style-type: none"> <li>• 2 hip pockets</li> <li>• 2 zipper welt cargo pockets</li> <li>• 2 back patch pockets</li> <li>• Mid-rise</li> <li>• Full elastic waistband with internal drawstring</li> <li>• Knit leg cuffs</li> </ul>	<p>60% Recycle Polyester, 34% Viscose from Bamboo, 6% Spandex</p> <p><b>CONTRAST FABRIC:</b> 91% Recycled Polyester, 9% Spandex</p>

**SIZES** R: (WB430): XXS-XL, 1XL-3XL - 28 ½" Inseam  
P: (WB430P): PXXS-PXL, P1X-P2X - 26" Inseam  
T: (WB430T): TXS-TXL - 30 ½" Inseam  
\*Fashion Colors: XS-XL, 1XL-2XL; PXS-PXL, P1X-P2X

- COLORS**
- Black BLK
  - Navy NVY
  - Pewter PEWT
  - Royal ROYL
  - Ceileste CLST
  - Wine WINE<sup>NEW</sup>
  - \*Sage Leaf SGLF<sup>SPRING 2024</sup>
  - \*Peach Blossom PHBM<sup>SPRING 2024</sup>



WB414  
**WOMEN'S 5-POCKET PANTS**

- Modern Fit
- 5 Pockets
- Fluid Resistant

DETAILS	FABRIC
<ul style="list-style-type: none"> <li>• 2 front zipper pockets</li> <li>• 1 vertical cell phone pocket</li> <li>• 2 back pockets</li> <li>• Mid-rise</li> <li>• Knit elastic waistband with internal drawstring</li> <li>• Knit yoke and side panels</li> <li>• Bootcut</li> </ul>	<p>60% Recycle Polyester, 34% Viscose from Bamboo, 6% Spandex</p> <p><b>CONTRAST FABRIC:</b> 91% Recycled Polyester, 9% Spandex</p>

**SIZES** R: (WB414): XXS-XL, 1XL-3XL - 31" Inseam  
P: (WB414P): PXXS-PXL, P1X-P2X - 28 ½" Inseam  
T: (WB414T): TXS-TXL - 33" Inseam  
\*Fashion Colors: XS-XL, 1XL-2XL; PXS-PXL, P1X-P2X

- COLORS**
- Black BLK
  - Navy NVY
  - Pewter PEWT
  - Royal ROYL
  - Ceileste CLST
  - Wine WINE<sup>NEW</sup>
  - \*Sage Leaf SGLF<sup>SPRING 2024</sup>
  - \*Peach Blossom PHBM<sup>SPRING 2024</sup>
  - \*Poolside PLSD<sup>SUMMER 2024</sup>



WB415  
**WOMEN'S 6-POCKET JOGGER PANTS**

- Modern Fit
- 6 Pockets
- Fluid Resistant

DETAILS	FABRIC
<ul style="list-style-type: none"> <li>• 2 front pockets</li> <li>• 2 zipper cargo pockets</li> <li>• 2 back pockets</li> <li>• Mid-rise</li> <li>• Knit elastic waistband with an adjustable internal drawstring</li> <li>• Side panels</li> <li>• Hi-low leg cuffs</li> </ul>	<p>60% Recycle Polyester, 34% Viscose from Bamboo, 6% Spandex</p> <p><b>CONTRAST FABRIC:</b> 91% Recycled Polyester, 9% Spandex</p>

**SIZES** R: (WB415): XXS-XL, 1XL-3XL - 27 ½" Inseam  
P: (WB415P): PXXS-PXL, P1X-P2X - 25" Inseam  
T: (WB415T): TXS-TXL - 29 ½" Inseam  
\*Fashion Colors: XS-XL, 1XL-2XL; PXS-PXL, P1X-P2X

- COLORS**
- Black BLK
  - Navy NVY
  - Pewter PEWT
  - Royal ROYL
  - Ceileste CLST
  - \*Black/Peach Blossom BKPH<sup>SPRING 2024</sup>
  - \*Poolside PLSD<sup>SUMMER 2024</sup>



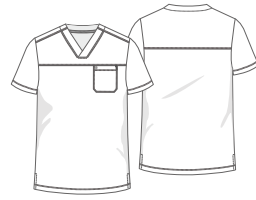
WJ704  
**WOMEN'S 2-POCKET JACKET**

- Modern Fit
- 2 Pockets
- Fluid Resistant

DETAILS	FABRIC
<ul style="list-style-type: none"> <li>• 2 side pockets</li> <li>• Zip-front closure</li> <li>• Front and back princess seams</li> <li>• Knit cuffs</li> <li>• Hi-low hem</li> <li>• Side vents</li> </ul>	<p>60% Recycle Polyester, 34% Viscose from Bamboo, 6% Spandex</p> <p><b>CONTRAST FABRIC:</b> 91% Recycled Polyester, 9% Spandex</p>

**SIZES** XXS-XL, 1XL-3XL  
Size Small Length: 26 ½"

- COLORS**
- Black BLK
  - Navy NVY
  - Pewter PEWT



WT131  
**MEN'S 2-POCKET V-NECK TOP**

- Modern Fit
- 2 Pockets
- Fluid Resistant

**DETAILS**

- V-neck
- Tuckable
- 1 patch chest pocket
- 1 hidden zipper chest pocket
- Front and back yokes
- Side vents

**FABRIC**

60% Recycle Polyester,  
34% Viscose from  
Bamboo, 6% Spandex

**CONTRAST FABRIC:**  
91% Recycled Polyester,  
9% Spandex

**SIZES** XS-3XL  
Size Medium Length: 28 ½"

- COLORS**
- Black BLK
  - Navy NVY
  - Pewter PEWT
  - Royal ROYL



WB418  
**MEN'S 7-POCKET CARGO PANTS**

- Modern Fit
- 7 Pockets
- Fluid Resistant

**DETAILS**

- 2 hip pockets
- 1 money clip pocket
- 1 welt cargo pocket
- 1 zipper cargo pocket
- 2 back snap pockets
- Mid-rise
- Button and zipper fly
- Elastic waist with internal drawstring
- Belt loops
- Tapered leg

**FABRIC**

60% Recycle Polyester,  
34% Viscose from  
Bamboo, 6% Spandex

**CONTRAST FABRIC:**  
91% Recycled Polyester,  
9% Spandex

**SIZES** R: (WB418): XS-3XL - 31" Inseam  
S: (WB418S): SS-S2X - 28 ½" Inseam

- COLORS**
- Black BLK
  - Navy NVY
  - Pewter PEWT
  - Royal ROYL



WJ705  
**MEN'S 3-POCKET JACKET**

- Modern Fit
- 3 Pockets
- Fluid Resistant

**DETAILS**

- 1 vertical zipper chest pocket
- 2 welt pockets
- Zip-front closure
- Knit front and back yokes
- Knit collar, sleeve panels, and side panels
- Knit cuffs

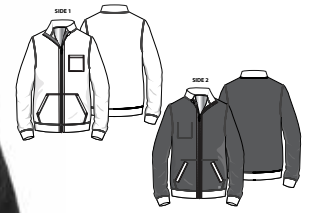
**FABRIC**

60% Recycle Polyester,  
34% Viscose from  
Bamboo, 6% Spandex

**CONTRAST FABRIC:**  
91% Recycled Polyester,  
9% Spandex

**SIZES** XS-3XL  
Size Medium Length: 28 ½"

- COLORS**
- Black BLK
  - Navy NVY



WJ706  
**UNISEX REVERSIBLE 5-POCKET JACKET**

- Reversible
- 5 Pockets
- Fluid Resistant

**DETAILS**

- Solid Side: 1 chest pocket, 2 kangaroo pockets
- Heather Side: 2 welt pockets
- Zip-front closure
- Knit cuffs
- Double-faced brushed knit
- Reversible

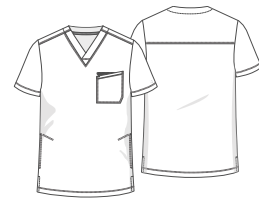
**FABRIC**

**SIDE 1 FABRIC:**  
65% Bamboo, 30%  
Acrylic, 5% Spandex

**SIDE 2 FABRIC:**  
68% Bamboo, 22%  
Acrylic, 5% Spandex,  
2.5% Silk, 2.5% Wool

**SIZES** XS-3XL  
Size Medium Length: 27"

- COLORS**
- Black/Heather Pewter BHPW
  - Navy/Heather Pine Grove NHPG



WT151

**MEN'S 4-POCKET V-NECK TOP**

- Modern Fit
- 4 Pockets
- Fluid Resistant

**DETAILS**

- V-neck
- Front and back yoke
- 1 zipper chest pocket
- 1 patch chest pocket
- 2 lower side seam pockets
- Side vents

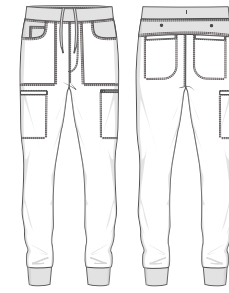
**FABRIC**

60% Recycle Polyester,  
34% Viscose from  
Bamboo, 6% Spandex

**CONTRAST FABRIC:**  
91% Recycled Polyester,  
9% Spandex

**SIZES** XS-3XL  
Size Medium Length: 28 1/2"

- COLORS**
- Black BLK
  - Navy NVY
  - Pewter PEWT
  - Royal ROYL



WB417

**MEN'S 7-POCKET JOGGER PANTS**

- Modern Fit
- 7 Pockets
- Fluid Resistant

**DETAILS**

- Mid-rise knit waist
- Internal drawcord
- 2 front pockets
- 1 coin pocket
- 1 front zipper cargo pocket
- 1 welt cargo pocket
- 2 back snap welt pockets
- Knit leg cuffs

**FABRIC**

60% Recycle Polyester,  
34% Viscose from  
Bamboo, 6% Spandex

**CONTRAST FABRIC:**  
91% Recycled Polyester,  
9% Spandex

**SIZES** Regular (WB417): XS-3XL  
Short (WB417S): SS-S2X

Length: Regular: 29 1/2" Inseam  
Short: 27" Inseam

- COLORS**
- Black BLK
  - Navy NVY
  - Pewter PEWT
  - Royal ROYL

# V·tess

The word Vitesse means "speed" in French—the mother tongue of White Cross's birthplace: Montreal, Canada. The V-Tess collection is designed for movement and energy, offering a range of sporty scrubs in fabrics that combine four-way stretch for maximum agility. In Fall 2023, V-Tess expands with seasonal fashion colors in the spring 2024est styles and two spring 2024, premium white coats.

FROM LEFT:  
Models wear White Cross V-Tess  
WL801 / WL800







WT134  
**WOMEN'S 3-POCKET V-NECK TOP**

- Contemporary Fit
- 3 Pockets
- Knit Panels

- DETAILS**
- 2 front pockets
  - 1 zipper pocket
  - V-neck
  - Front and back princess seams
  - Back side knit panels
  - Side vents

**FABRIC**

74% Polyester,  
 19% Rayon,  
 7% Spandex

**CONTRAST FABRIC:**  
 90% Polyester, 10%  
 Spandex

**SIZES** XXS-5XL  
 Size Small Length: 26"

- COLORS**
- Black BLA
  - Navy NAV
  - Dark Pewter DPWT
  - Royal ROY
  - Ceileste CLST
  - Wine WINE<sup>NEW</sup>
  - White WHT<sup>NEW</sup>
  - Caribbean CARIB<sup>NEW</sup>



WT110  
**WOMEN'S 2-POCKET V-NECK TOP**

- Contemporary Fit
- 2 Pockets
- Cut to Flatter

- DETAILS**
- 1 chest pocket
  - 1 side pocket
  - V-neck
  - Jersey knit front yoke and back panel

**FABRIC**

74% Polyester,  
 19% Rayon,  
 7% Spandex

**CONTRAST FABRIC:**  
 90% Polyester, 10%  
 Spandex Jersey Knit

**SIZES** XXS-5XL  
 \*Fashion Colors: XS-3XL  
 Size Small Length: 25 ½"

- COLORS**
- Black BLA
  - Navy NAV
  - Royal ROY
  - Dark Pewter DPWT
  - Wine WINE
  - Ceil CEILB
  - Caribbean CARIB
  - \*Pink Flash PKFL<sup>SUMMER 2024</sup>



WT114  
**WOMEN'S 1-POCKET V-NECK TOP**

- Contemporary Fit
- 1 Pocket
- Cut to Flatter

- DETAILS**
- 1 zipper chest pocket
  - Tuckable
  - V-neck
  - Jersey-knit back panel
  - Side vents

**FABRIC**

74% Polyester,  
 19% Rayon,  
 7% Spandex

**CONTRAST FABRIC:**  
 90% Polyester, 10%  
 Spandex Jersey Knit

**SIZES** XXS-5XL  
 Size Small Length: 26 ½"

- COLORS**
- Black BLA
  - Navy NAV
  - Royal ROY
  - Dark Pewter DPWT
  - Wine WINE
  - Ceil CEILB



WB410  
**WOMEN'S 7-POCKET JOGGER PANTS**

- Contemporary Fit
- 7 Pockets
- Cut to Flatter

- DETAILS**
- 2 hip pockets
  - 2 cargo pockets
  - 1 zipper cargo pocket
  - 2 back pockets
  - Jersey-knit waist, back panels, and leg cuffs

**FABRIC**

74% Polyester,  
 19% Rayon,  
 7% Spandex

**CONTRAST FABRIC:**  
 90% Polyester, 10%  
 Spandex Jersey Knit

**SIZES** R: (WB410): XXS-5XL - 28 ½" Inseam  
 P: (WB410P): XXS-3XL - 26" Inseam  
 T: (WB410T): XS-XXL - 30 ½" Inseam  
 \*Fashion Colors: XS-3XL, XS-P2X Petite

- COLORS**
- Black BLA
  - Navy NAV
  - Royal ROY
  - Dark Pewter DPWT
  - Wine WINE
  - Ceil CEILB
  - Caribbean CARIB
  - \*Pink Flash PKFL<sup>SUMMER 2024</sup>



794

**WOMEN'S 1-POCKET V-NECK TOP**

- Contemporary Fit
- 1 Pocket
- Tuckable

**DETAILS**

- 1 chest pocket
- V-neck
- Tuckable
- Badge loop
- Back darts
- Side vents

**FABRIC**

74% Polyester,  
19% Rayon,  
7% Spandex

**SIZES** All Colors: XXS-5XL  
\*Fashion Colors: XS-3XL  
Size Small Length: 25"

- COLORS**
- Black BLA
  - Navy NAV
  - Dark Pewter DPWT
  - White WHI
  - Wine WINE
  - Ceil CEIL
  - Royal ROY



950

**WOMEN'S 4-POCKET V-NECK TOP**

- Contemporary Fit
- 4 Pockets
- Knit Panels

**DETAILS**

- 2 hidden pockets at seams
- 2 patch pockets
- V-neck
- Jersey-knit front and back yokes
- Front and back princess seams
- Side vents

**FABRIC**

74% Polyester,  
19% Rayon,  
7% Spandex

**CONTRAST FABRIC:**  
92% Polyester, 8%  
Spandex Jersey Knit

**SIZES** XXS-5XL  
\*Fashion Colors: XS-3XL  
Size Small Length: 25 1/2"

- COLORS**
- Black BLA
  - Navy NAV
  - Dark Pewter DPWT
  - White WHI
  - Wine WINE
  - Ceil CEILB
  - Caribbean CARIB
  - Royal ROY



953

**WOMEN'S 3-POCKET WARM-UP JACKET**

- Contemporary Fit
- 3 Pockets
- Clean Construction

**DETAILS**

- 2 angled patch pockets
- 1 chest accessory pocket
- Crew neck
- Contrasting piping
- Zip-front closure
- Jersey-knit collar and arm cuffs
- Front and back princess seams
- Locker loop

**FABRIC**

74% Polyester,  
19% Rayon,  
7% Spandex

**SIZES** XS-3XL  
Size Small Length: 26"

- COLORS**
- Black BLA
  - Navy NAV



337

**WOMEN'S 6-POCKET CARGO PANTS**

- Contemporary Fit
- 6 Pockets
- Comfort Waistband

**DETAILS**

- 2 curved hip pockets
- 1 cargo pocket
- 1 zipper cargo pocket with bungee loop
- Low-rise jersey-knit elastic waist
- Striped drawstring
- Side vents

**FABRIC**

74% Polyester,  
19% Rayon,  
7% Spandex

**SIZES** R: (337): XXS-5XL 31" Inseam  
P: (337P): XXS-3XL 29" Inseam  
T: (337T): XS-XXL 33" Inseam  
\*Fashion Colors: XXS-3XL, XS-XXL Petite

- COLORS**
- Black BLA
  - Navy NAV
  - Dark Pewter DPWT
  - White WHI
  - Wine WINE
  - Ceil CEILB
  - Caribbean CARIB
  - Royal ROY



380

**WOMEN'S 7-POCKET JOGGER PANTS**

- Contemporary Fit
- 7 Pockets
- Comfort Waistband

**DETAILS**

- 2 angled hip pockets
- 2 cargo pockets
- 1 zipper accessory pocket
- 2 back pockets
- Mid-rise triple-elastic waist
- Drawstring
- Rib-knit waistband and leg cuffs

**FABRIC**

74% Polyester,  
19% Rayon,  
7% Spandex

**SIZES**

R: (380): XXS-5XL - 31" Inseam  
P: (380P): XXS-3XL - 29" Inseam  
T: (380T): XS-XXL - 33" Inseam  
\*Fashion Colors: XXS-5XL, XS-XXL Petite

**COLORS**

- Black BLA
- Navy NAV
- Dark Pewter DPWT
- White WHI
- Wine WINE
- Ceil CEILB
- Royal ROY



2206

**MEN'S 2-POCKET V-NECK TOP**

- Contemporary Fit
- 2 Pockets
- Tuckable

**DETAILS**

- 1 double chest pocket with pen divider
- V-neck
- Tuckable
- Back yoke

**FABRIC**

74% Polyester,  
19% Rayon,  
7% Spandex

**SIZES**

XS-5XL  
Size Small Length: 28 ½"

**COLORS**

- Black BLA
- Navy NAV
- Dark Pewter DPWT
- White WHI
- Wine WINE
- Ceil CEILB
- Caribbean CARIB
- Royal ROY



2207

**MEN'S 3-POCKET V-NECK SCRUB TOP**

- Contemporary Fit
- 3 Pockets
- Stretch Back Panel

**DETAILS**

- 1 chest pocket with tape
- 2 patch pockets
- V-neck
- Contrasting stripe on chest pocket
- Back yoke with stretch insert
- Side vents

**FABRIC**

74% Polyester,  
19% Rayon,  
7% Spandex

**SIZES**

XS-5XL  
Size Small Length: 28"

**COLORS**

- Black BLA
- Navy NAV
- Dark Pewter DPWT
- White WHI
- Wine WINE
- Ceil CEILB
- Caribbean CARIB
- Royal ROY



222

**MEN'S 6-POCKET JOGGER PANTS**

- Contemporary Fit
- 6 Pockets
- Comfort Waistband

**DETAILS**

- 2 angled hip pockets
- 2 cargo pockets
- 2 back pockets
- Bungee loop on left cargo pocket
- Mid-rise triple-elastic waist
- Drawstring
- Rib-knit waistband and leg cuffs

**FABRIC**

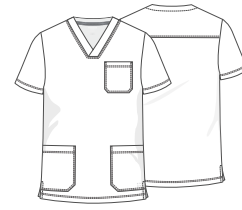
74% Polyester,  
19% Rayon,  
7% Spandex

**SIZES**

R: (222): XS-5XL - 29 ½" Inseam  
S: (222S): XS-3XL - 27" Inseam  
T: (222T): SML-XXL - 31 ½" Inseam

**COLORS**

- Black BLA
- Navy NAV
- White WHI
- Wine WINE
- Ceil CEILB
- Caribbean CARIB
- Royal ROY



WT149

**MEN'S 3-POCKET V-NECK TOP**

- Contemporary Fit
- 3 Pockets
- Side Vents

**DETAILS**

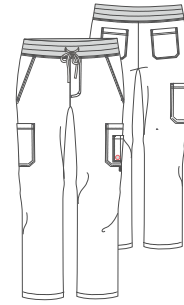
- Contemporary fit
- V-neck
- 1 chest pocket
- 2 patch pockets
- Side vents
- Back yoke

**FABRIC**

74% Polyester,  
19% Rayon,  
7% Spandex

**SIZES** XS-5XL  
Size Medium Length: 29"

- COLORS**
- Black BLA
  - Navy NAV
  - Dark Pewter DPWT
  - White WHI
  - Wine WINE
  - Ceil CEILB
  - Caribbean CARIB
  - Royal ROY



227

**MEN'S 7-POCKET CARGO PANTS**

- Contemporary Fit
- 7 Pockets
- Comfort Waistband

**DETAILS**

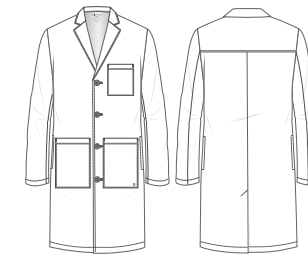
- 2 angled hip pockets
- 1 single cargo pocket
- 1 double cargo pocket
- Pen divider
- Bungee loop on left cargo pocket
- 2 back pockets
- Mid-rise triple-elastic waist
- Drawstring
- Mock fly front

**FABRIC**

74% Polyester,  
19% Rayon,  
7% Spandex

**SIZES** R: (227): XS-5XL - 32" Inseam  
S: (227S): XS-3XL - 29 1/2" Inseam  
T: (227T): S-2XL - 34" Inseam

- COLORS**
- Black BLA
  - Navy NAV
  - Dark Pewter DPWT
  - Taylor Grey TGY
  - White WHI
  - Wine WINE
  - Ceil CEILB
  - Caribbean CARIB
  - Royal ROY



WL801

**MEN'S 5-POCKET FULL-LENGTH WHITE COAT**

- Contemporary Fit
- 5 Pockets
- Tablet Pockets

**DETAILS**

- 1 chest pocket with pen divider
- 2 front tablet pockets
- 2 interior tablet pockets
- Notch collar
- 4-button closure
- Side access vents
- Center back vent

**FABRIC**

74% Polyester,  
19% Rayon,  
7% Spandex

**SIZES** XS-5XL  
Size Medium Length: 38"  
Size Medium Sleeve Length: 26 1/2"

- COLORS** White WHI



WL800

**WOMEN'S 4-POCKET MID-LENGTH WHITE COAT**

- Contemporary Fit
- 4 Pockets
- Interior Pockets

**DETAILS**

- 2 patch pockets
- 1 interior cell phone pocket
- 1 interior tablet pocket
- Interior badge loop
- Notch collar
- Front princess seams
- 4-button closure
- Back yoke
- Center back vent

**FABRIC**

74% Polyester,  
19% Rayon,  
7% Spandex

**SIZES** XXS-5XL  
Size Small Length: 34 1/2"  
Size Small Sleeve Length: 24 1/2"

- COLORS** White WHI

# FIT

Created to provide the ultimate levels of comfort, durability, and performance, the FIT collection features minimal activewear-inspired design, four-way stretch and moisture-wicking technology. This season, you will see additional fashion colors to add to your assortment.

FROM LEFT:  
Models wear White Cross FIT  
785 & 365 / 2263 & 223





785

**WOMEN'S 2-POCKET V-NECK TOP**

- Contemporary Fit
- 2 Pockets
- Cut to Flatter

**DETAILS**

- 2 patch pockets
- Bungee loop on left pocket
- V-neck
- Mesh knit racer back
- Front and back princess seams
- Side vents

**FABRIC**

90% Polyester,  
10% Spandex  
  
CONTRAST FABRIC:  
100% Polyester Mesh

**SIZES** XXS-5XL  
\*Fashion Colors: XS-3XL  
Size Small Length: 26"

- COLORS**
- Black BLA
  - Navy NAV
  - Pewter PWT
  - White WHI
  - \*Chambray Blue CMBL SPRING 2024
  - \*Maive Shadows MSH
  - Royal ROY
  - Wine WINE
  - Ceil Blue CEILB
  - Caribbean CARIB



207

**WOMEN'S LONG-SLEEVE TEE**

- Contemporary Fit
- No Pockets
- Comfort Stretch

**DETAILS**

- Crew neck
- Antimicrobial

**FABRIC**

90% Polyester,  
10% Spandex

**SIZES** XS-3XL  
Size Small Length: 25"

- COLORS**
- Black BLA
  - Navy NAV
  - White WHI



456

**WOMEN'S 3-POCKET WARM-UP JACKET**

- Contemporary Fit
- 3 Pockets
- Lightweight Warmth

**DETAILS**

- 1 chest accessory pocket
- 2 angled patch pockets
- Mock neck
- Lightweight polar fleece
- Spandex at top, pockets, cuffs
- Zip-front closure
- Snap cuffs
- High-low hem
- Back yoke

**FABRIC**

100% Polyester  
Polar Fleece  
  
CONTRAST FABRIC:  
90% Polyester,  
10% Spandex

**SIZES** XXS-5XL  
\*Fashion Colors: XS-3XL  
Size Small Length: 27 1/2"

- COLORS**
- Black BLA
  - Navy NAV
  - Pewter PWT
  - Royal ROY
  - White WHI
  - \*Maive Shadows MSH



957

**WOMEN'S 2-POCKET WARM-UP JACKET**

- Contemporary Fit
- 2 Pockets
- Cut to Flatter

**DETAILS**

- 2 curved pockets
- Crew neck
- Mesh collar, arm cuffs, and detailing
- Zip-front closure
- Mesh back yoke
- Front and back princess seams

**FABRIC**

90% Polyester,  
10% Spandex  
  
CONTRAST FABRIC:  
100% Polyester Mesh

**SIZES** XS-3XL  
Size Small Length: 25"

- COLORS**
- Black BLA
  - Navy NAV
  - Pewter PWT
  - Royal ROY
  - Wine WINE
  - White WHI



365  
**WOMEN'S 4-POCKET JOGGER PANTS**

- Contemporary Fit
- 4 Pockets
- Comfort Waistband

DETAILS	FABRIC
<ul style="list-style-type: none"> <li>• 2 curved hip pockets</li> <li>• 2 cargo pockets</li> <li>• Bungee loop on left cargo pocket</li> <li>• Low-rise triple-elastic waist</li> <li>• Drawstring</li> <li>• Rib-knit leg cuffs</li> </ul>	<p>90% Polyester, 10% Spandex</p>

**SIZES** R: (365): XXS-5XL - 29" Inseam  
 P: (365P): XXS-3XL - 27" Inseam  
 T: (365T): XS-XXL - 31" Inseam  
 \*Fashion Colors: XXS-3XL, XXS-XXL Petite

- COLORS**
- Black BLA
  - Navy NAV
  - Pewter PWT
  - Royal ROY
  - Ceil Blue CEILB
  - White WHI
  - \*Raspberry Coulis RCL
  - \*Mauve Shadows MSH
  - \*\*Chambray Blue CMBL SPRING 2024  
XS-3XL; XS-XXL Petite



399  
**WOMEN'S 2-POCKET JOGGER PANTS**

- Contemporary Fit
- 2 Pockets
- Easy-Fit Waistband

DETAILS	FABRIC
<ul style="list-style-type: none"> <li>• 2 curved hip pockets</li> <li>• Mid-rise elastic-back waist</li> <li>• Flat front</li> <li>• Elastic leg cuffs</li> <li>• Mesh detailing on back waistband and outer calves</li> </ul>	<p>90% Polyester, 10% Spandex</p>

**SIZES** R: (399): XXS-3XL - 29" Inseam  
 P: (399P): XXS-XXL - 27" Inseam

- COLORS**
- Black BLA
  - Navy NAV
  - Pewter PWT
  - Royal ROY
  - Ceil Blue CEILB
  - White WHI
  - Caribbean CARIB



373  
**WOMEN'S 6-POCKET CARGO PANTS**

- Contemporary Fit
- 2 Pockets
- Comfort Waistband

DETAILS	FABRIC
<ul style="list-style-type: none"> <li>• 2 angled hip pockets</li> <li>• 2 cargo pockets</li> <li>• 2 back pockets</li> <li>• Mid-rise elastic mesh waist</li> <li>• Drawstring</li> <li>• Mesh detailing on cargo and back pockets</li> <li>• Straight leg</li> <li>• Side vents</li> </ul>	<p>90% Polyester, 10% Spandex</p>

**SIZES** R: (373): XXS-5XL - 31" Inseam  
 P: (373P): XXS-3XL - 29" Inseam  
 T: (373T): XS-XXL - 34" Inseam  
 \*Fashion Colors: XXS-3XL, XXS-XXL Petite

- COLORS**
- Black BLA
  - Navy NAV
  - Pewter PWT
  - White WHI
  - Caribbean CARIB
  - \*Mauve Shadows MSH
  - \*Raspberry Coulis RCL
  - Royal ROY
  - Wine WINE
  - Ceil Blue CEILB



2417  
**WOMEN'S 3-POCKET MID-LENGTH WHITE COAT**

- Contemporary Fit
- 3 Pockets
- Cut to Flatter

DETAILS	FABRIC
<ul style="list-style-type: none"> <li>• 2 patch pockets</li> <li>• 1 mesh accessory pocket</li> <li>• Notch collar</li> <li>• Zip-front closure</li> <li>• Two-way zipper</li> <li>• Front and back princess seams</li> <li>• Side vents</li> </ul>	<p>90% Polyester, 10% Spandex</p>

**SIZES** XXS-3XL  
 Size Small Length: 32"

- COLORS**
- Black BLA
  - White WHI



2263

**MEN'S 3-POCKET V-NECK TOP**

- Contemporary Fit
- 3 Pockets
- Clean Construction

**DETAILS**

- 1 chest pocket with tape
- 2 patch pockets
- V-neck
- Side vents

**FABRIC**

90% Polyester,  
10% Spandex

**SIZES**

XS-5XL  
Size Medium Length: 27"

**COLORS**

- Black BLA
- Navy NAV
- Pewter PWT
- Royal ROY
- Wine WINE
- Ceil Blue CEILB



2266

**MEN'S 3-POCKET V-NECK TOP**

- Contemporary Fit
- 2 Pockets
- Clean Construction

**DETAILS**

- 1 chest welt pocket
- 2 hidden pockets at seams
- V-neck
- Mesh front and back yokes
- Mesh side panels

**FABRIC**

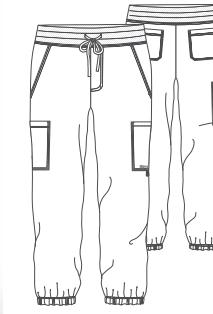
90% Polyester,  
10% Spandex  
  
CONTRAST FABRIC:  
100% Polyester Mesh

**SIZES**

XS-5XL  
Size Medium Length: 27"

**COLORS**

- Black BLA
- Navy NAV
- Pewter PWT
- Royal ROY
- Wine WINE
- Ceil Blue CEILB
- White WHI
- Caribbean CARIB



223

**MEN'S 6-POCKET JOGGER PANTS**

- Contemporary Fit
- 6 Pockets
- Comfort Waistband

**DETAILS**

- 2 angled hip pockets
- 2 cargo pockets
- 2 back pockets
- Bungee loop on left cargo pocket
- Mid-rise triple-elastic mesh waist
- Drawstring
- Mock fly front
- Elastic leg cuffs

**FABRIC**

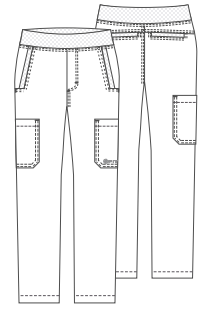
90% Polyester,  
10% Spandex

**SIZES**

R: (223): XS-5XL - 29 1/2" Inseam  
S: (223S): XS-3XL - 27" Inseam  
T: (223T): SML-XXL - 31 1/2" Inseam

**COLORS**

- Black BLA
- Navy NAV
- Pewter PWT
- Royal ROY
- Wine WINE
- Ceil Blue CEILB
- Caribbean CARIB



229

**MEN'S STRAIGHT-LEG CARGO SCRUB PANTS**

- Contemporary Fit
- 6 Pockets
- Comfort Waistband

**DETAILS**

- 2 hip pockets
- 2 cargo pockets
- 2 back pockets
- Mid-rise mesh yoga waist
- Internal drawstring
- Mock fly front
- Mesh detailing on hip and back pockets

**FABRIC**

90% Polyester,  
10% Spandex

**SIZES**

R: (229): XS-5XL 32" Inseam  
S: (229S): XS-3XL  
T: (229T): S-XXL

**COLORS**

- Black BLA
- Navy NAV
- Pewter PWT
- Royal ROY
- Wine WINE
- Ceil Blue CEILB
- White WHI
- Caribbean CARIB



# PRINTS

## EXCEPTIONAL CHARACTER.

Since our foundation in 1918, we've built our brand on personal relationships. Our prints collection is designed with this in mind, featuring a range of light-hearted and characterful print garments designed to foster joy, lift the spirits and forge deeper connections.

### BREATHABLE

Designed with light-weight fabrics to keep you cool all day.

### FADE RESISTANT

Fade resistant fabrics ensure your scrubs look exceptional on day 1 or day 100.

### WRINKLE RESISTANT

Wrinkle-resistant fabric keeps the light-hearted and characterful print the center of attention.



618

### WOMEN'S 3-POCKET V-NECK SCRUB TOP

- Contemporary Fit
- 3 Pockets
- Cut to Flatter
- Accessory Pocket

#### DETAILS

- 2 patch pockets
- 1 accessory pocket
- Accessory tape on wearer's left shoulder
- Side vents for extra ease of movement

#### FABRIC

92% Polyester/  
8% Spandex

- Breathable
- Fade resistant
- Shape retention
- Wrinkle resistant



BAA BAA BLACK SHEEP (BBBS)

COORDINATING COLORS XS-3XL

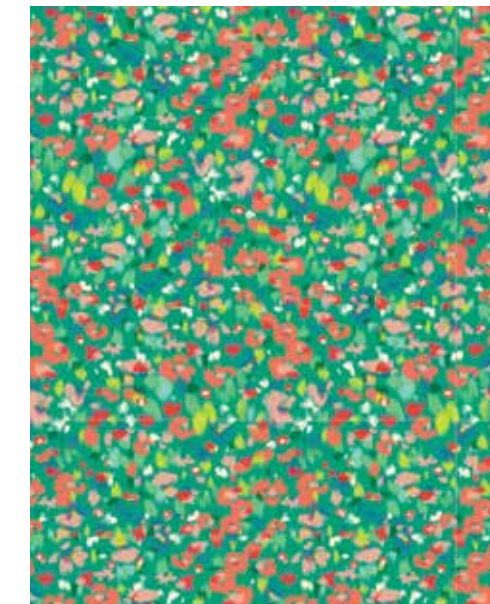
- Black BLK
- Pewter PWT
- White WHI



BUTTERFLY DELIGHT (BUDE)

COORDINATING COLORS XS-3XL

- Black BLK
- White WHI
- Pink Flash PKFL
- Poolside PLSD



GEO FUN (GEFU)

COORDINATING COLORS XS-3XL

- White WHI
- Poolside PLSD



ON THE GO (OTGO)

COORDINATING COLORS XS-3XL

- Black BLK
- White WHI



TIE-DYE LOVE (TDLO)

COORDINATING COLORS XS-3XL

- Black BLK
- White WHI
- Poolside PLSD
- Pink Flash PKFL



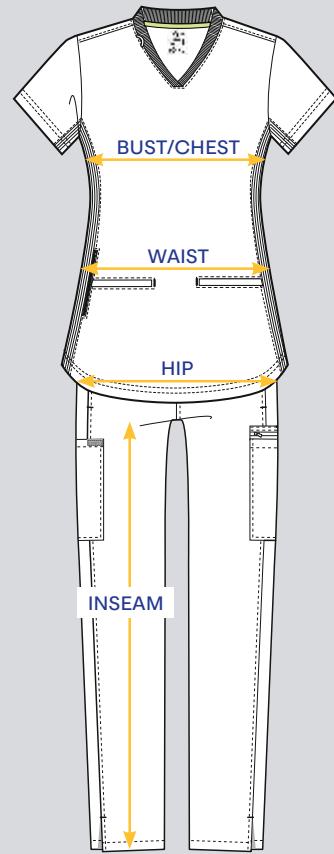
WATERCOLOR DREAMS (WADR)

COORDINATING COLORS XS-5XL

- Black BLK
- White WHI
- Wine WINE
- Maue Shadows MSH
- Real Teal RTE
- Regal Blue RGBL

# SIZE AND FIT GUIDE

To ensure you're choosing the correct size in our garments, take the measurements outlined below, then compare them with the sizing charts for Landau, White Cross and Urbane collections that you'll find in the following pages.



## BUST/CHEST

The measurement over the fullest part of the chest.

## WAIST

The measurement of the smallest indentation of the natural waistline.

## HIPS

The measurement of the fullest curve of the hip or approximately 8" below the waistline.

## INSEAM/INSIDE LEG

The measurement from the top of the inner thigh to 1" below the ankle bone.

## NOTE

For accurate measurements, pull the measuring tape snugly to your body and avoid stretching.

# WHITE CROSS

(Measurements are shown in inches)

## WOMEN'S APPAREL (CRFT ONLY)

ALPHA	XXS	XS	S	M	L	XL	1XL	2XL	3XL
EU NUMERIC	30-32	34-36	38-40	42-44	46	48	50	52-54	56-58
UK/AU NUMERIC	0-2	4-6	8-10	12-14	16	18	20	22-24	26-28
US/CA NUMERIC	00-0	2-4	6-8	10	12	14	16	18W-20W	22W-24W
BUST	32-33	34-35	36-37	38-39	40-41	42-44	45-47	49-51	52-55
WAIST	23-24	25-26	27-28	29-30	31-33	34-36	37-40	41-44	45-48
HIP	33-34	35-36	37-38	39-40	41-42	43-45	46-48	49-52	53-56

## WOMEN'S APPAREL

ALPHA	XXS	XS	S	M	L	XL	XXL	3XL	4XL	5XL
BUST	32-33	33-34	35-36	37-39	40-43	44-47	48-49	50-52	53-54	56-58
WAIST	24-25	25-26	27-28	29-31	32-34	35-38	39-41	42-44	45-46	48-50
HIP	34-35	35-36	37-38	39-41	42-45	46-49	50-51	52-54	55-56	58-60

## MEN'S APPAREL (CRFT ONLY)

ALPHA	XS	S	M	L	XL	XXL	3XL	4XL	5XL
CHEST	33-35	36-38	39-41	42-45	46-49	50-53	54-56	58-61	62-65
WAIST	26-28	29-31	32-34	35-38	39-42	43-46	47-50	51-54	55-58
HIP	34-35	35-36	37-38	39-41	42-45	46-49	50-51	52-54	55-56

## MEN'S / UNISEX\* APPAREL

ALPHA	XS	S	M	L	XL	XXL	3X	4X	5X
CHEST	33-34	35-37	38-40	41-44	45-48	49-50	51-52	53-55	56-58
WAIST	24-26	27-28	29-31	32-34	35-38	39-41	42-44	45-47	48-50
HIP	33-35	36-38	39-41	42-45	46-49	50-53	54-56	58-61	62-65

\*Women may want to order one size smaller.



# kindthread

KINDTHREAD US CLIENT SERVICES  
1.800.238.7513

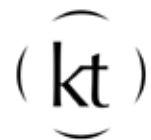
KINDTHREAD CANADA CLIENT SERVICES  
1.800.909.9060

Please contact your sales or client services representative with questions regarding our product offering, ordering and marketing needs.

FOLLOW US ON INSTAGRAM

Meta (Instagram/Facebook): @WhiteCrossUniforms  
LinkedIn: White Cross, Kindthread

LANDAU | WHITE CROSS



Embrace  
Exceptional.

kindthread  
WHITE CROSS